

DALY UNIT NO. 4
WATERFLOOD EOR PROJECT
ANNUAL REPORT FOR 2012

May 24, 2013

Tundra Oil and Gas Partnership

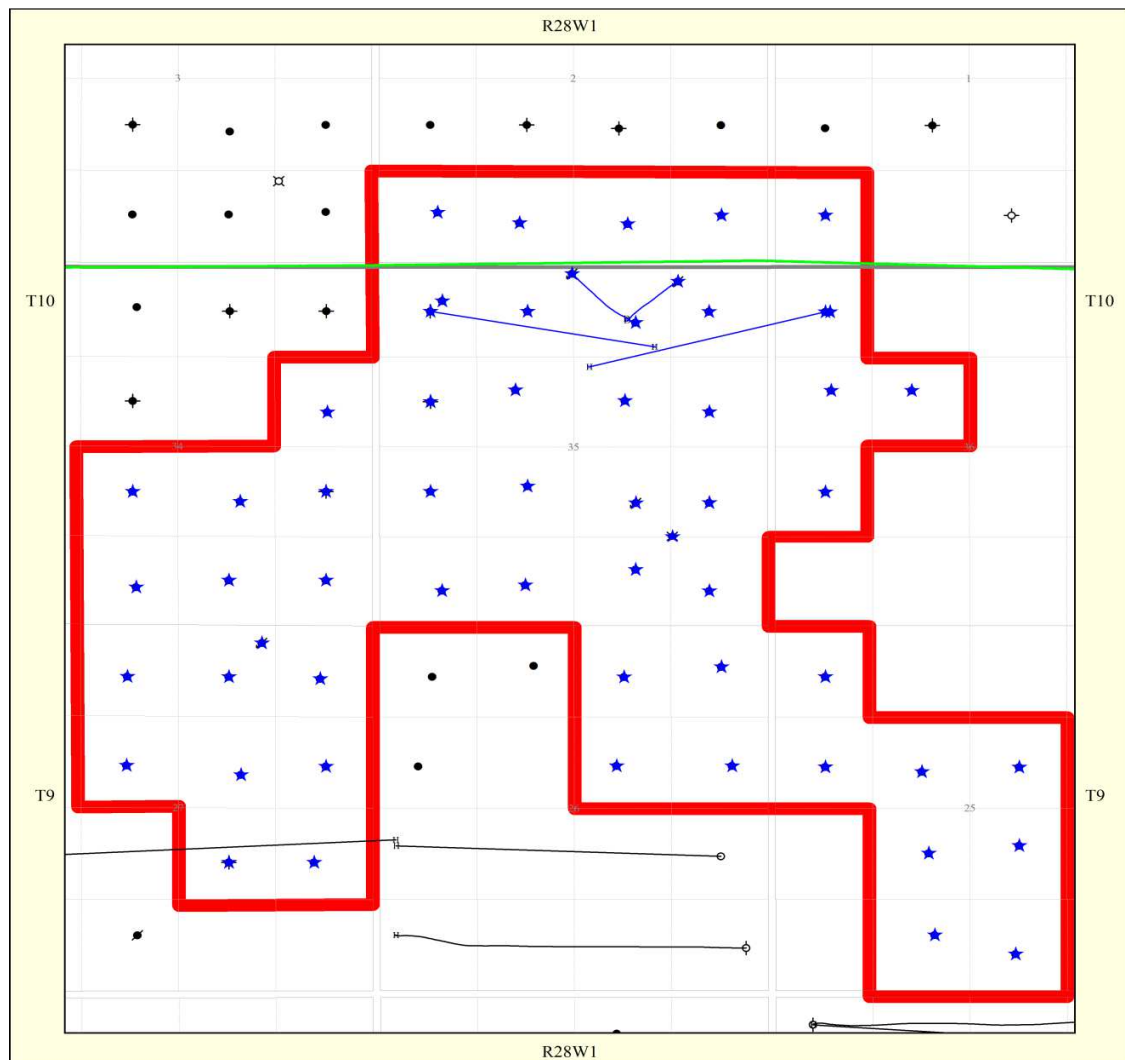
Table of Contents

Introduction	3
Discussion	4
Production History	4
Waterflood History	5
Waterflood EOR Operating Strategy and Performance	6
Water Source and Quality	6
Injection Wellhead Pressure	6
Reservoir Pressure	7
Well Servicing	7
Voidage Replacement	7
Waterflood Performance and Discussion	7
List of Appendices	
Appendix A: Well List and Well Status	8
Appendix B: Daly unit No. 4 Injection Pattern Summary	
Appendix C: Injector Pattern Production/Injection Rates, Cumulative and VRRS, Plots and Tables	

INTRODUCTION

Daly Unit No.4 Enhanced Oil Recovery (EOR) Waterflood Project was approved under Board Order No. PM 65. Daly Unit No. 4 was acquired from Zargon Oil & Gas Ltd. on June 1, 2012 with Tundra Oil and Gas as the new Operator. The EOR project area, outlined in red in Figure 1, contains 61 wells over 52 LSDs in Township 9 and 10, Range 28W1. Well list and well status is available in Appendix A.

Figure 1. Daly Unit No. 4 Area Outline



In accordance with Section 73 of the Manitoba Drilling and Production Regulation, Tundra submits the following 2012 Annual Progress Report for Daly Unit No. 4 as required by Board Order No. PM 65.

Discussion

Production History

For the wells included in Daly Unit No.4, production started in September 1962 with 00/05-35-009-28W1/00. From 1980 – 1983, 51 wells were drilled. Oil production peaked at 84.37 m³/d in September of 1984. The average production for the unit was 13.57 m³/d of oil and 126.75 m³/d of water, and the average WOR was 9.37 m³/m³ at the end of December 2012. The oil production rate, injection rate and WOR during each month for each injection pattern and for the whole project are presented in Appendix C. The rates and WOR are presented in Figure 2.

Figure 2. Daly Unit No. 4 Production/Injection Rates and WOR vs. Time

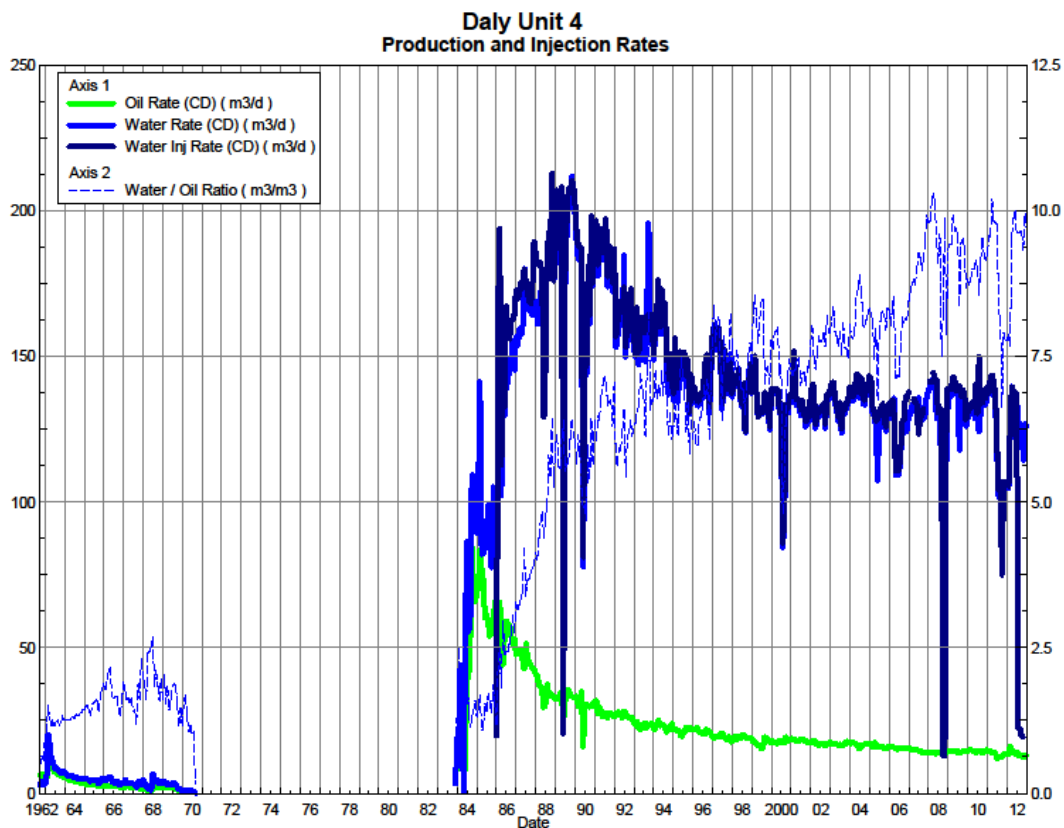
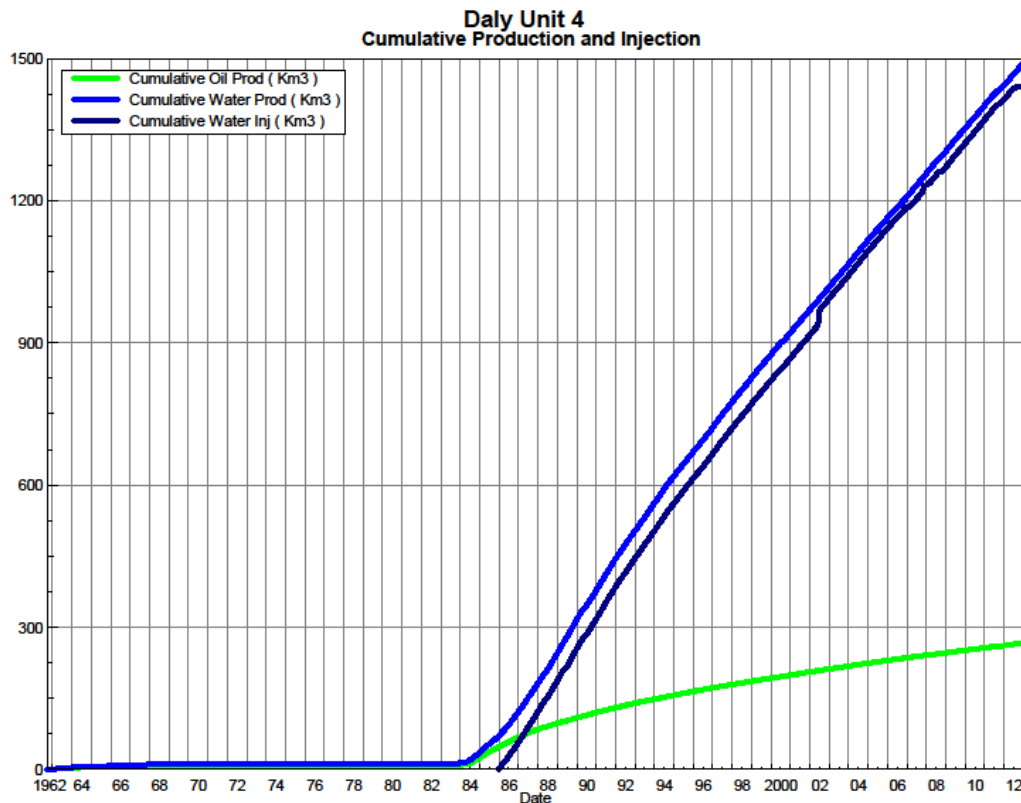


Figure 3 shows the cumulative production for Daly Unit No. 4 to the end of December 2012 as 266.65 E³m³ of oil, and 1490.47 E³m³ of water. The cumulative water injected is over 1445.34 E³m³. The cumulative volume of oil, and water produced and fluid injected for each injection pattern and for the whole project for each injection well is presented in Appendix C.

Figure 3. Daly Unit No. 4 Cumulative Oil, Water and Water Injected vs. Time



Waterflood History

Daly Unit No. 4 area was discovered in 1962 when 3 wells were initially drilled. In 1970 the wells were abandoned due to poor productivity. The area was not further delineated until 1983 when an aggressive drilling program was initiated. From 1980 – 1983, 51 wells were drilled. Prior to being unitized in April 1988, the area was developed on 40-acre spacing. Following unitization of the field in 1988, a pilot waterflood pattern was initiated in Section 27. The waterflood program in the unit currently has four patterns of

which three are 40-acre inverted five-spot patterns and one 160-acre inverted nine-spot pattern.

As of December 2012 Daly Unit No. 4 has 4 active injectors and 4 injection patterns in place. Water injection started in January 1986. An overall summary for each injector pattern is presented in Appendix B.

Any future revisions to the waterflood development or surveillance plan would be based on new production or performance response data, technical studies or observed reservoir behavior and reserves recovery interpretations.

Waterflood EOR Operating Strategy and Performance

Water Source and Quality

The injected water in the area is currently treated with corrosion inhibitor to ensure the integrity of the field equipment is maintained.

Injection Wellhead Pressures

The 2012 monthly wellhead pressures are shown in Table 1 for each injection well. The pressures from January to May are not in the database since Tundra acquired Daly Unit No. 4 in June of 2012.

Table 1. Wellhead Injection Pressures (kPa) for Daly Unit No. 4

	Injection Well Pressures			
	00/07-35	02/14-35	02/15-27	02/16-35
January 2012	-	-	-	-
February	-	-	-	-
March	-	-	-	-
April	-	-	-	-
May	-	-	-	-
June	7900	7100	7900	7100
July	7901	7101	7901	7101
August	7901	7101	7901	7101
September	7901	7101	7901	7101
October	7901	7101	7901	7101
November	7901	7101	7901	7101
December	7900	7100	7900	7100

Reservoir Pressure

No reservoir pressure measurements were taken at Daly Unit No. 4 in 2012.

Well Servicing

No maintenance was required on the 61 wells in Daly Unit No. 4 in 2012.

Voidage Replacement

Cumulative voidage for Daly Unit No. 4 was 0.814 in December 2012. Calculation, plots and tables of the Voidage replacement ratio on a monthly and cumulative basis for each injection pattern and for the project area are presented in Appendix C.

Waterflood Performance Discussion

Given an OOIP of 7,949 e^3m^3 (50 MMstb), the current recovery factor is 3.3%. The overall performance of this waterflood has been extremely poor as indicated by the low recovery factor, and obvious lack of waterflood response in producers. This is likely due to significant reservoir discontinuity and the location of the injectors, resulting in poor areal sweep efficiency. The Unit will require additional water injection wells in addition to increased fluid handling throughput in order to make this an effective waterflood.

Appendix A: Well List and Well Status

UWI		Well Status		UWI		Well Status
100/02-25-009-28W1/00	Vertical	Capable Of Oil Prod		100/01-35-009-28W1/00	Vertical	Capable Of Oil Prod
100/03-25-009-28W1/00	Vertical	Capable Of Oil Prod		102/01-35-009-28W1/00	Vertical	Abandoned
100/06-25-009-28W1/00	Vertical	Capable Of Oil Prod		100/02-35-009-28W1/00	Vertical	Capable Of Oil Prod
100/07-25-009-28W1/00	Vertical	Capable Of Oil Prod		100/03-35-009-28W1/00	Vertical	Capable Of Oil Prod
100/10-25-009-28W1/00	Vertical	Capable Of Oil Prod		100/04-35-009-28W1/00	Vertical	Capable Of Oil Prod
100/11-25-009-28W1/00	Vertical	Capable Of Oil Prod		100/05-35-009-28W1/00	Vertical	Abandoned
100/12-25-009-28W1/00	Vertical	Capable Of Oil Prod		100/05-35-009-28W1/02	Vertical	Capable Of Oil Prod
100/13-25-009-28W1/00	Vertical	Capable Of Oil Prod		100/06-35-009-28W1/00	Vertical	Capable Of Oil Prod
100/09-26-009-28W1/00	Vertical	Capable Of Oil Prod		100/07-35-009-28W1/00	Vertical	Water Injection Well
100/10-26-009-28W1/00	Vertical	Capable Of Oil Prod		100/08-35-009-28W1/00	Vertical	Capable Of Oil Prod
100/15-26-009-28W1/00	Vertical	Capable Of Oil Prod		100/09-35-009-28W1/00	Vertical	Capable Of Oil Prod
100/16-26-009-28W1/00	Vertical	Capable Of Oil Prod		100/10-35-009-28W1/00	Vertical	Capable Of Oil Prod
100/07-27-009-28W1/00	Vertical	Abandoned		100/11-35-009-28W1/00	Vertical	Capable Of Oil Prod
100/07-27-009-28W1/02	Vertical	Capable Of Oil Prod		100/12-35-009-28W1/00	Vertical	Abandoned
100/08-27-009-28W1/00	Vertical	Capable Of Oil Prod		100/12-35-009-28W1/02	Vertical	Capable Of Oil Prod
100/09-27-009-28W1/00	Vertical	Capable Of Oil Prod		100/13-35-009-28W1/00	Vertical	Capable Of Oil Prod
100/10-27-009-28W1/00	Vertical	Capable Of Oil Prod		102/13-35-009-28W1/00	Horizontal	Drilling Ahead
100/11-27-009-28W1/00	Vertical	Capable Of Oil Prod		100/14-35-009-28W1/00	Vertical	Capable Of Oil Prod
100/14-27-009-28W1/00	Vertical	Capable Of Oil Prod		102/14-35-009-28W1/00	Deviated	Water Injection Well
100/15-27-009-28W1/00	Vertical	Capable Of Oil Prod		100/15-35-009-28W1/00	Vertical	Capable Of Oil Prod
102/15-27-009-28W1/00	Vertical	Water Injection Well		100/16-35-009-28W1/00	Vertical	Capable Of Oil Prod
100/16-27-009-28W1/00	Vertical	Capable Of Oil Prod		102/16-35-009-28W1/00	Deviated	Water Injection Well
100/01-34-009-28W1/00	Vertical	Capable Of Oil Prod		100/05-36-009-28W1/00	Vertical	Capable Of Oil Prod
100/02-34-009-28W1/00	Vertical	Capable Of Oil Prod		100/11-36-009-28W1/00	Vertical	Capable Of Oil Prod
100/03-34-009-28W1/00	Vertical	Capable Of Oil Prod		100/12-36-009-28W1/00	Vertical	Capable Of Oil Prod
100/06-34-009-28W1/00	Vertical	Capable Of Oil Prod		100/13-36-009-28W1/00	Vertical	Capable Of Oil Prod
100/07-34-009-28W1/00	Vertical	Capable Of Oil Prod		102/13-36-009-28W1/00	Horizontal	Location
100/08-34-009-28W1/00	Vertical	Abandoned		100/04-01-010-28W1/00	Vertical	Capable Of Oil Prod
100/09-34-009-28W1/00	Vertical	Capable Of Oil Prod		100/01-02-010-28W1/00	Vertical	Capable Of Oil Prod
				100/02-02-010-28W1/00	Vertical	Capable Of Oil Prod
				100/03-02-010-28W1/00	Vertical	Capable Of Oil Prod
				100/04-02-010-28W1/00	Vertical	Capable Of Oil Prod

Appendix B

Daly Unit No. 4 Pattern Summary as of December 31, 2012

Pattern Name	Injector Location (009-28W1)	Injector Surface Location	Status	No. of Supported Wells	Supported Wells	Allocation Factor	Pattern Prod Start Year	Inj Start Month	Oil Rate (m3/d)	Water Rate (m3/d)	WOR (m3/m3)	Water Injection (m3/d)	Cum Oil (E3m3)	Cum Water (E3m3)	Cum Inj Water (E3m3)	Monthly VRR	Cum VRR
02/15-27-009-28W1/0	02/15-27	02/15-27	WTR Injection	4	00/01-34, 00/02-34, 00/15-27, 00/16-27	0.25	1984	Dec. 1988	0.47	2.10	4.48	0.00	12.13	15.47	813.31	0.000	28.586
00/07-35-009-28W1/0	00/07-35	00/07-35	WTR Injection	8	00/01-35, 00/03-35, 00/09-35, 00/11-35	0.25	1983	Dec. 1991	0.79	1.63	2.05	20.26	14.66	25.75	406.48	8.184	9.813
					00/02-35, 00/06-35, 00/08-35, 00/10-35	0.5											
02/14-35-009-28W1/0	02/14-35	00/15-35	WTR Injection	4	00/02-02, 00/03-02, 00/14-35, 00/15-35	0.25	1984	Jun. 2000	0.41	0.36	0.87	1.00	6.61	5.94	9.43	1.259	0.725
02/16-35-009-28W1/0	02/16-35	00/15-35	WTR Injection	4	00/01-02, 00/02-02, 00/15-35, 00/16-35	0.25	1983	Jun. 2000	0.64	1.04	1.63	0.94	8.85	21.27	33.78	0.542	1.099

Oil Formation Vol Factor : 1.07100 m3/m3

Water Formation Vol Factor : 1.00150 m3/m3

Water / Oil Ratio : 3.39 m3/m3

Pattern: 02/15-27-009-28Inj Set: DalyUnit#4

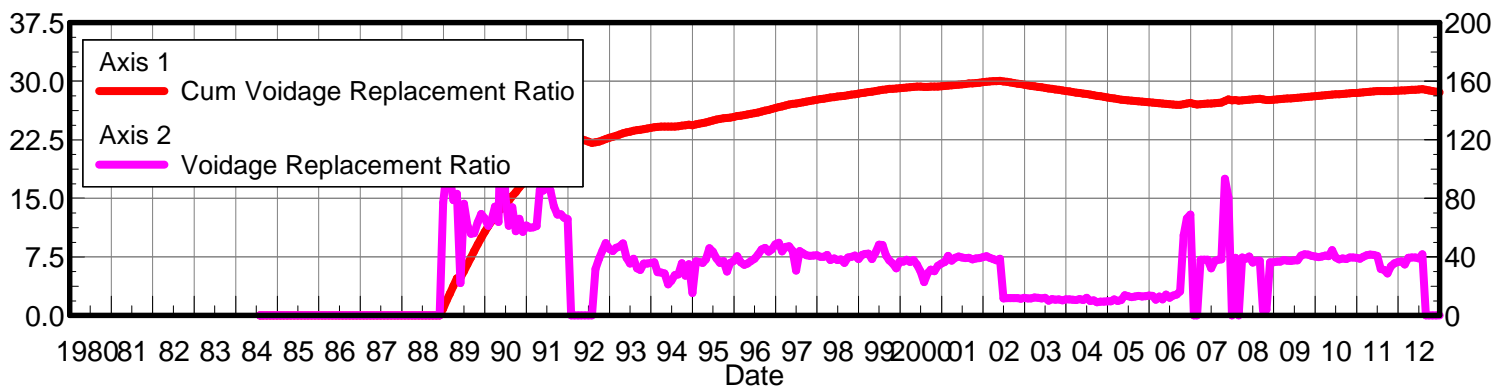
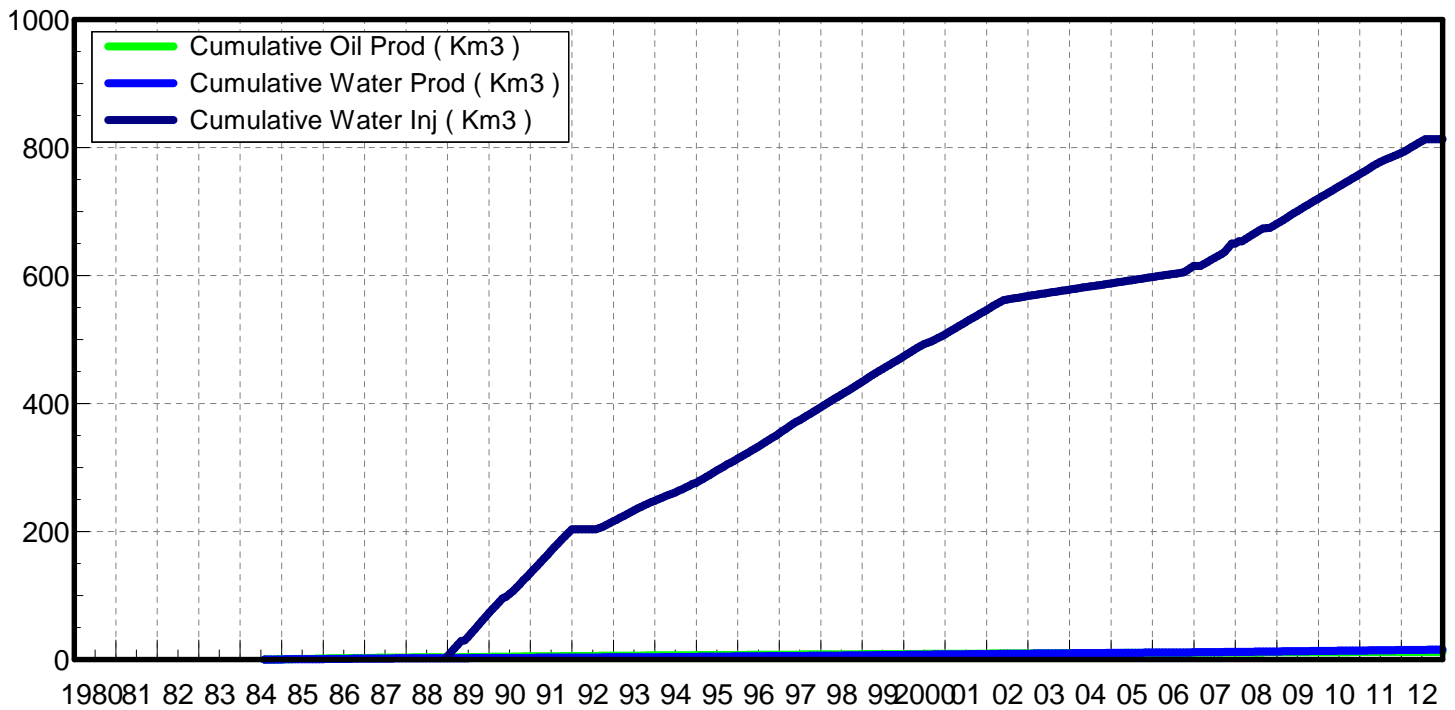
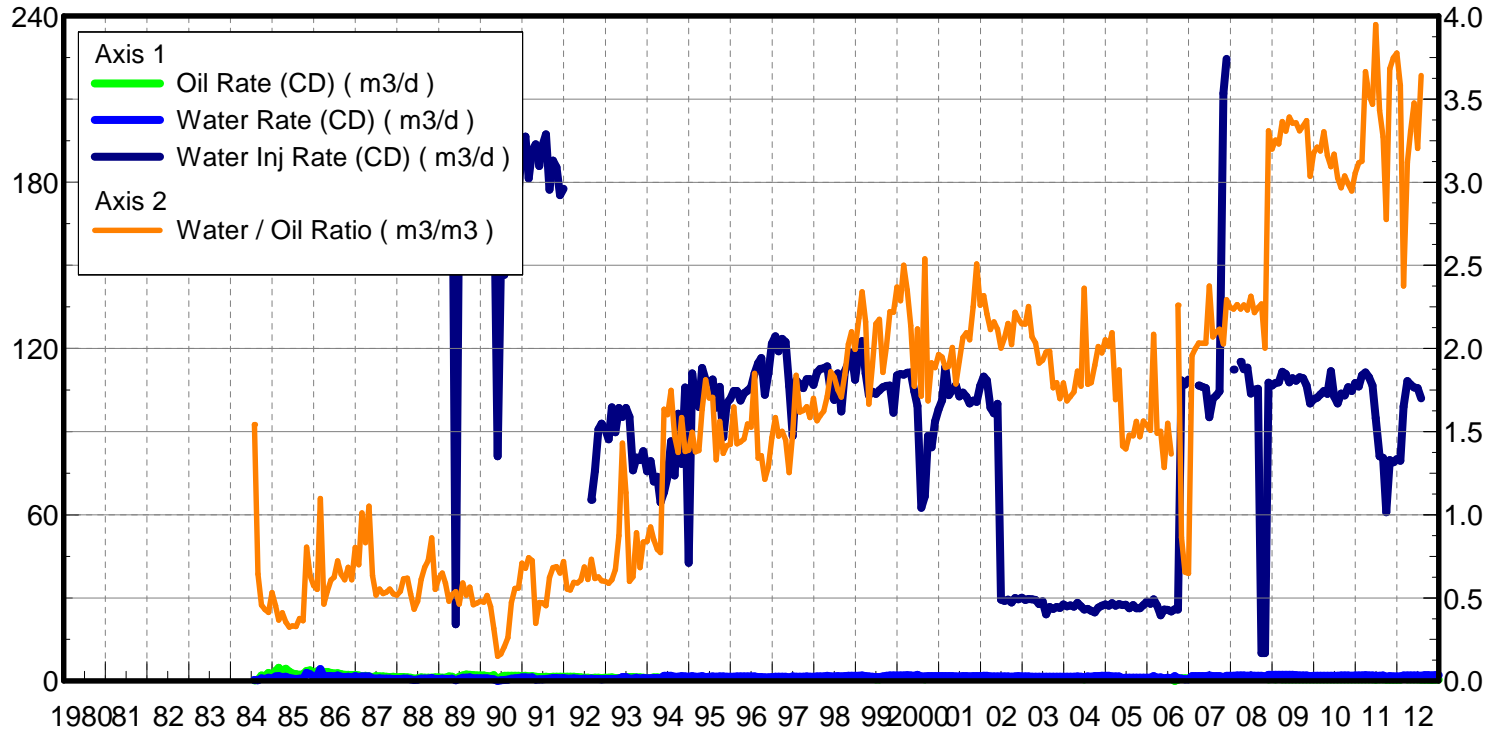
May 23, 2013

Operator: Zargon_O&G_Ltd

Oil Rate (CD) : 0.56 m3/d

Water Rate (CD) : 1.89 m3/d

Water Inj Rate (CD) : 31.39 m3/d



Date	Oil Rate (CD) m3/d	Water Rate (CD) m3/d	Water Oil Ratio m3/m3	Water Inj Rate (CD) m3/d	Cum Oil Prod Km3	Cum Water Prod Km3	Cum Water Inj Km3	Voidage Replacement Ratio	Cum Voidage Replacemt Ratio
7/31/1984	0.22	0.34	1.54		0.01	0.01	0.00	0.000	0.000
8/31/1984	0.36	0.23	0.64		0.02	0.02	0.00	0.000	0.000
9/30/1984	1.99	0.91	0.46		0.08	0.05	0.00	0.000	0.000
10/31/1984	1.76	0.76	0.43		0.13	0.07	0.00	0.000	0.000
11/30/1984	2.98	1.23	0.41		0.22	0.11	0.00	0.000	0.000
12/31/1984	1.68	0.89	0.53		0.27	0.13	0.00	0.000	0.000
1/31/1985	3.58	1.63	0.45		0.38	0.18	0.00	0.000	0.000
2/28/1985	4.83	1.77	0.37		0.52	0.23	0.00	0.000	0.000
3/31/1985	3.52	1.44	0.41		0.63	0.28	0.00	0.000	0.000
4/30/1985	4.39	1.56	0.35		0.76	0.32	0.00	0.000	0.000
5/31/1985	3.45	1.12	0.32		0.87	0.36	0.00	0.000	0.000
6/30/1985	2.65	0.88	0.33		0.95	0.39	0.00	0.000	0.000
7/31/1985	2.42	0.79	0.33		1.02	0.41	0.00	0.000	0.000
8/31/1985	2.29	0.86	0.38		1.09	0.44	0.00	0.000	0.000
9/30/1985	2.48	0.90	0.36		1.17	0.46	0.00	0.000	0.000
10/31/1985	3.58	2.88	0.80		1.28	0.55	0.00	0.000	0.000
11/30/1985	3.87	2.45	0.63		1.40	0.63	0.00	0.000	0.000
12/31/1985	2.62	1.50	0.57		1.48	0.67	0.00	0.000	0.000
1/31/1986	3.49	1.92	0.55		1.58	0.73	0.00	0.000	0.000
2/28/1986	3.89	4.27	1.10		1.69	0.85	0.00	0.000	0.000
3/31/1986	3.27	1.51	0.46		1.79	0.90	0.00	0.000	0.000
4/30/1986	3.27	1.77	0.54		1.89	0.95	0.00	0.000	0.000
5/31/1986	2.98	1.81	0.61		1.99	1.01	0.00	0.000	0.000
6/30/1986	2.65	1.66	0.63		2.06	1.06	0.00	0.000	0.000
7/31/1986	2.77	2.00	0.72		2.15	1.12	0.00	0.000	0.000
8/31/1986	2.48	1.59	0.64		2.23	1.17	0.00	0.000	0.000
9/30/1986	2.26	1.38	0.61		2.30	1.21	0.00	0.000	0.000
10/31/1986	2.29	1.57	0.68		2.37	1.26	0.00	0.000	0.000
11/30/1986	2.10	1.28	0.61		2.43	1.30	0.00	0.000	0.000
12/31/1986	2.26	1.82	0.80		2.50	1.35	0.00	0.000	0.000
1/31/1987	1.99	1.39	0.70		2.56	1.40	0.00	0.000	0.000
2/28/1987	1.62	1.64	1.01		2.61	1.44	0.00	0.000	0.000
3/31/1987	1.93	1.61	0.83		2.67	1.49	0.00	0.000	0.000
4/30/1987	1.63	1.71	1.05		2.72	1.54	0.00	0.000	0.000
5/31/1987	1.48	0.94	0.63		2.76	1.57	0.00	0.000	0.000
6/30/1987	1.74	0.90	0.52		2.81	1.60	0.00	0.000	0.000
7/31/1987	1.65	0.91	0.55		2.86	1.63	0.00	0.000	0.000
8/31/1987	1.62	0.85	0.53		2.91	1.66	0.00	0.000	0.000
9/30/1987	1.54	0.82	0.53		2.96	1.68	0.00	0.000	0.000
10/31/1987	1.47	0.81	0.55		3.01	1.71	0.00	0.000	0.000
11/30/1987	1.51	0.79	0.53		3.05	1.73	0.00	0.000	0.000
12/31/1987	1.36	0.70	0.52		3.09	1.75	0.00	0.000	0.000
1/31/1988	1.41	0.76	0.54		3.14	1.77	0.00	0.000	0.000
2/29/1988	1.43	0.88	0.61		3.18	1.80	0.00	0.000	0.000
3/31/1988	1.37	0.85	0.62		3.22	1.83	0.00	0.000	0.000
4/30/1988	1.25	0.66	0.52		3.26	1.85	0.00	0.000	0.000
5/31/1988	0.83	0.36	0.43		3.29	1.86	0.00	0.000	0.000
6/30/1988	0.98	0.47	0.48		3.31	1.87	0.00	0.000	0.000

Date	Oil Rate (CD) m3/d	Water Rate (CD) m3/d	Water Oil Ratio m3/m3	Water Inj Rate (CD) m3/d	Cum Oil Prod Km3	Cum Water Prod Km3	Cum Water Inj Km3	Voidage Replacement Ratio	Cum Voidage Replacemt Ratio
7/31/1988	1.33	0.81	0.61		3.36	1.90	0.00	0.000	0.000
8/31/1988	1.25	0.85	0.68		3.39	1.92	0.00	0.000	0.000
9/30/1988	1.23	0.89	0.72		3.43	1.95	0.00	0.000	0.000
10/31/1988	1.20	1.03	0.86		3.47	1.98	0.00	0.000	0.000
11/30/1988	1.31	0.72	0.55		3.51	2.00	0.00	0.000	0.000
12/31/1988	1.26	0.78	0.62	163.31	3.55	2.03	5.06	76.991	0.870
1/31/1989	1.23	0.80	0.65	206.93	3.58	2.05	11.48	98.218	1.950
2/28/1989	1.20	0.71	0.59	187.21	3.62	2.07	16.72	93.749	2.814
3/31/1989	1.61	0.78	0.48	196.91	3.67	2.10	22.82	78.770	3.792
4/30/1989	1.58	0.82	0.52	208.07	3.72	2.12	29.07	83.082	4.769
5/31/1989	0.58	0.31	0.54	20.48	3.73	2.13	29.70	22.114	4.851
6/30/1989	1.53	0.71	0.46	178.93	3.78	2.15	35.07	76.262	5.662
7/31/1989	1.96	1.16	0.59	199.19	3.84	2.19	41.24	61.249	6.553
8/31/1989	2.35	1.21	0.52	207.39	3.91	2.22	47.67	55.760	7.438
9/30/1989	2.25	1.27	0.56	206.97	3.98	2.26	53.88	56.247	8.264
10/31/1989	2.16	0.99	0.46	210.39	4.05	2.29	60.40	63.725	9.122
11/30/1989	1.96	0.92	0.47	208.90	4.11	2.32	66.67	69.303	9.932
12/31/1989	1.97	0.94	0.48	202.48	4.17	2.35	72.95	66.342	10.716
1/31/1990	2.03	0.96	0.47	192.03	4.23	2.38	78.90	61.198	11.428
2/28/1990	1.82	0.94	0.52	187.86	4.28	2.41	84.16	65.088	12.048
3/31/1990	1.66	0.74	0.45	187.48	4.33	2.43	89.97	74.320	12.738
4/30/1990	2.11	0.67	0.32	186.87	4.40	2.45	95.58	63.795	13.365
5/31/1990	0.38	0.06	0.15	81.10	4.41	2.45	98.09	175.288	13.689
6/30/1990	1.46	0.24	0.16	148.17	4.45	2.46	102.54	82.492	14.203
7/31/1990	1.88	0.39	0.21	146.55	4.51	2.47	107.08	61.215	14.681
8/31/1990	1.84	0.48	0.26	180.81	4.57	2.49	112.69	73.967	15.291
9/30/1990	1.85	0.87	0.47	163.93	4.62	2.51	117.60	57.575	15.775
10/31/1990	1.84	1.03	0.56	198.00	4.68	2.54	123.74	66.060	16.394
11/30/1990	1.89	1.05	0.56	175.10	4.74	2.58	128.99	57.019	16.884
12/31/1990	1.77	1.26	0.71	194.03	4.79	2.61	135.01	61.559	17.448
1/31/1991	1.88	1.27	0.68	196.48	4.85	2.65	141.10	59.914	17.999
2/28/1991	1.66	1.23	0.74	181.32	4.90	2.69	146.18	60.278	18.448
3/31/1991	1.75	1.26	0.72	191.45	4.95	2.73	152.11	61.101	18.965
4/30/1991	1.59	0.55	0.35	193.73	5.00	2.74	157.92	85.891	19.525
5/31/1991	1.41	0.67	0.47	185.84	5.04	2.76	163.69	85.264	20.070
6/30/1991	1.43	0.67	0.47	193.20	5.08	2.78	169.48	87.887	20.614
7/31/1991	1.52	0.69	0.45	197.23	5.13	2.81	175.60	85.437	21.173
8/31/1991	1.40	0.87	0.62	177.29	5.18	2.83	181.09	74.626	21.643
9/30/1991	1.56	1.06	0.68	187.83	5.22	2.86	186.73	68.894	22.101
10/31/1991	1.53	1.05	0.69	185.32	5.27	2.90	192.47	69.107	22.559
11/30/1991	1.53	0.99	0.65	175.33	5.31	2.93	197.73	66.767	22.963
12/31/1991	1.51	1.08	0.72	177.65	5.36	2.96	203.24	65.878	23.376
1/31/1992	1.55	0.86	0.55		5.41	2.99	203.24	0.000	23.167
2/29/1992	1.59	0.87	0.55		5.46	3.01	203.24	0.000	22.972
3/31/1992	1.54	0.91	0.59		5.50	3.04	203.24	0.000	22.768
4/30/1992	1.44	0.85	0.59		5.55	3.07	203.24	0.000	22.587
5/31/1992	1.29	0.78	0.61		5.59	3.09	203.24	0.000	22.420
6/30/1992	1.21	0.83	0.69		5.62	3.12	203.24	0.000	22.264

Date	Oil Rate (CD) m3/d	Water Rate (CD) m3/d	Water Oil Ratio m3/m3	Water Inj Rate (CD) m3/d	Cum Oil Prod Km3	Cum Water Prod Km3	Cum Water Inj Km3	Voidage Replacement Ratio	Cum Voidage Replacemt Ratio
7/31/1992	1.22	0.75	0.61		5.66	3.14	203.24	0.000	22.110
8/31/1992	1.14	0.83	0.73	65.45	5.70	3.16	205.27	31.863	22.177
9/30/1992	1.16	0.72	0.62	75.77	5.73	3.19	207.54	38.676	22.281
10/31/1992	1.20	0.75	0.63	90.81	5.77	3.21	210.36	44.532	22.431
11/30/1992	1.12	0.68	0.60	92.83	5.80	3.23	213.14	49.480	22.593
12/31/1992	1.20	0.72	0.60	90.97	5.84	3.25	215.96	45.597	22.742
1/31/1993	1.20	0.70	0.59	87.23	5.88	3.27	218.66	43.931	22.879
2/28/1993	1.27	0.77	0.61	98.75	5.91	3.30	221.43	46.280	23.024
3/31/1993	1.09	0.73	0.67	89.77	5.95	3.32	224.21	47.166	23.171
4/30/1993	1.03	0.90	0.87	98.50	5.98	3.34	227.17	49.193	23.332
5/31/1993	0.97	1.38	1.43	95.32	6.01	3.39	230.12	39.396	23.455
6/30/1993	1.26	1.43	1.13	98.50	6.04	3.43	233.08	35.507	23.556
7/31/1993	1.48	0.88	0.60	95.32	6.09	3.46	236.03	38.690	23.672
8/31/1993	1.39	0.87	0.63	76.03	6.13	3.49	238.39	32.259	23.735
9/30/1993	1.33	1.18	0.89	80.67	6.17	3.52	240.81	31.032	23.791
10/31/1993	1.29	0.88	0.68	79.71	6.21	3.55	243.28	35.419	23.870
11/30/1993	1.23	1.03	0.84	83.00	6.25	3.58	245.77	35.466	23.950
12/31/1993	1.10	0.92	0.84	75.71	6.28	3.61	248.12	36.014	24.026
1/31/1994	1.10	1.01	0.93	79.35	6.32	3.64	250.58	36.307	24.106
2/28/1994	1.27	1.08	0.85	72.00	6.35	3.67	252.59	29.508	24.141
3/31/1994	1.35	1.07	0.79	73.68	6.40	3.70	254.88	29.416	24.180
4/30/1994	1.22	0.94	0.77	64.47	6.43	3.73	256.81	28.755	24.209
5/31/1994	1.19	1.95	1.64	68.19	6.47	3.79	258.93	21.169	24.181
6/30/1994	1.16	1.86	1.60	73.70	6.50	3.85	261.14	23.737	24.177
7/31/1994	1.11	1.95	1.75	86.52	6.54	3.91	263.82	27.580	24.207
8/31/1994	1.04	1.53	1.47	74.16	6.57	3.95	266.12	28.111	24.236
9/30/1994	1.11	1.52	1.37	96.48	6.60	4.00	269.01	35.722	24.320
10/31/1994	1.09	1.72	1.58	78.28	6.64	4.05	271.44	27.118	24.343
11/30/1994	1.24	1.71	1.38	105.90	6.67	4.10	274.62	34.941	24.429
12/31/1994	1.13	1.57	1.39	42.67	6.71	4.15	275.94	15.381	24.360
1/31/1995	1.17	1.75	1.50	111.02	6.75	4.21	279.38	37.042	24.463
2/28/1995	1.13	1.55	1.38	101.22	6.78	4.25	282.21	36.669	24.545
3/31/1995	1.13	1.56	1.39	98.93	6.81	4.30	285.28	35.819	24.628
4/30/1995	1.09	1.78	1.63	112.93	6.84	4.35	288.67	38.238	24.732
5/31/1995	0.82	1.49	1.81	108.64	6.87	4.40	292.04	45.968	24.864
6/30/1995	0.89	1.52	1.70	107.83	6.90	4.44	295.27	43.606	24.982
7/31/1995	1.01	1.72	1.71	108.76	6.93	4.50	298.64	38.927	25.083
8/31/1995	1.14	1.52	1.33	98.65	6.96	4.54	301.70	35.998	25.161
9/30/1995	1.08	1.69	1.56	106.18	7.00	4.60	304.89	37.219	25.246
10/31/1995	1.20	1.64	1.37	87.94	7.03	4.65	307.61	30.054	25.282
11/30/1995	1.13	1.59	1.42	100.25	7.07	4.69	310.62	35.828	25.354
12/31/1995	1.10	1.56	1.42	101.79	7.10	4.74	313.78	37.287	25.436
1/31/1996	0.95	1.57	1.65	104.65	7.13	4.79	317.02	40.542	25.533
2/29/1996	1.15	1.65	1.43	104.64	7.16	4.84	320.06	36.312	25.606
3/31/1996	1.16	1.67	1.44	101.18	7.20	4.89	323.19	34.667	25.671
4/30/1996	1.16	1.68	1.46	103.80	7.23	4.94	326.31	35.554	25.739
5/31/1996	1.08	1.66	1.55	104.72	7.27	4.99	329.55	37.213	25.817
6/30/1996	1.06	1.61	1.53	106.05	7.30	5.04	332.73	38.681	25.900

Date	Oil Rate (CD) m3/d	Water Rate (CD) m3/d	Water Oil Ratio m3/m3	Water Inj Rate (CD) m3/d	Cum Oil Prod Km3	Cum Water Prod Km3	Cum Water Inj Km3	Voidage Replacement Ratio	Cum Voidage Replacemt Ratio
7/31/1996	0.92	1.69	1.85	110.96	7.33	5.09	336.17	41.534	26.000
8/31/1996	1.06	1.42	1.34	114.76	7.36	5.14	339.73	45.107	26.116
9/30/1996	1.04	1.41	1.36	116.50	7.39	5.18	343.23	46.268	26.232
10/31/1996	1.04	1.26	1.21	103.22	7.42	5.22	346.43	43.576	26.329
11/30/1996	1.04	1.35	1.29	110.87	7.46	5.26	349.75	45.057	26.433
12/31/1996	0.99	1.45	1.46	121.75	7.49	5.30	353.53	48.607	26.563
1/31/1997	0.94	1.50	1.59	124.45	7.52	5.35	357.38	49.680	26.697
2/28/1997	1.07	1.58	1.47	119.00	7.55	5.39	360.72	43.725	26.793
3/31/1997	1.03	1.54	1.50	123.50	7.58	5.44	364.54	46.740	26.914
4/30/1997	1.03	1.49	1.45	122.32	7.61	5.49	368.21	47.296	27.030
5/31/1997	1.04	1.30	1.25	106.36	7.64	5.53	371.51	44.137	27.123
6/30/1997	1.13	1.68	1.49	88.43	7.67	5.58	374.16	30.708	27.146
7/31/1997	0.85	1.56	1.84	108.49	7.70	5.63	377.53	43.932	27.238
8/31/1997	0.94	1.52	1.62	107.16	7.73	5.67	380.85	42.512	27.324
9/30/1997	0.95	1.55	1.63	105.64	7.76	5.72	384.02	41.156	27.400
10/31/1997	0.98	1.62	1.65	108.88	7.79	5.77	387.39	40.671	27.478
11/30/1997	1.00	1.59	1.59	108.95	7.82	5.82	390.66	40.941	27.554
12/31/1997	0.94	1.60	1.70	106.85	7.85	5.87	393.98	41.124	27.631
1/31/1998	1.05	1.65	1.56	111.35	7.88	5.92	397.43	40.168	27.706
2/28/1998	1.05	1.68	1.60	112.61	7.91	5.96	400.58	40.130	27.773
3/31/1998	1.01	1.65	1.62	112.87	7.94	6.02	404.08	41.308	27.852
4/30/1998	1.08	1.84	1.71	113.58	7.97	6.07	407.49	37.981	27.915
5/31/1998	0.91	1.70	1.86	104.20	8.00	6.12	410.72	38.888	27.977
6/30/1998	0.92	1.69	1.83	101.46	8.03	6.17	413.76	37.895	28.031
7/31/1998	1.02	1.80	1.75	111.04	8.06	6.23	417.20	38.416	28.093
8/31/1998	0.98	1.67	1.71	97.27	8.09	6.28	420.22	35.864	28.137
9/30/1998	0.97	1.78	1.84	111.71	8.12	6.34	423.57	39.715	28.202
10/31/1998	0.92	1.87	2.02	114.86	8.15	6.39	427.13	40.171	28.272
11/30/1998	0.92	1.92	2.10	118.80	8.18	6.45	430.69	40.917	28.345
12/31/1998	0.92	1.84	1.99	108.73	8.20	6.51	434.07	38.473	28.403
1/31/1999	0.89	1.94	2.18	119.46	8.23	6.57	437.77	41.336	28.478
2/28/1999	0.85	2.00	2.34	122.68	8.26	6.62	441.20	42.142	28.550
3/31/1999	0.82	1.76	2.16	110.97	8.28	6.68	444.64	42.157	28.622
4/30/1999	0.98	1.63	1.67	103.11	8.31	6.73	447.74	38.502	28.673
5/31/1999	0.82	1.55	1.89	104.41	8.34	6.78	450.97	43.007	28.741
6/30/1999	0.67	1.43	2.15	103.58	8.36	6.82	454.08	48.278	28.821
7/31/1999	0.67	1.46	2.18	104.88	8.38	6.86	457.33	48.171	28.904
8/31/1999	0.88	1.64	1.86	106.02	8.40	6.91	460.62	41.004	28.965
9/30/1999	0.92	1.85	2.01	106.51	8.43	6.97	463.81	37.598	29.011
10/31/1999	0.91	2.03	2.22	106.60	8.46	7.03	467.12	35.480	29.048
11/30/1999	0.91	2.03	2.22	96.78	8.49	7.09	470.02	32.213	29.066
12/31/1999	0.87	2.05	2.37	110.27	8.51	7.16	473.44	36.979	29.111
1/31/2000	0.90	2.05	2.29	110.74	8.54	7.22	476.87	36.733	29.154
2/29/2000	0.81	2.03	2.50	110.53	8.57	7.28	480.08	38.052	29.200
3/31/2000	0.89	2.09	2.35	111.27	8.59	7.35	483.53	36.652	29.242
4/30/2000	0.92	1.96	2.14	111.34	8.62	7.40	486.87	37.812	29.288
5/31/2000	1.07	1.89	1.77	104.55	8.65	7.46	490.11	34.510	29.317
6/30/2000	1.04	2.20	2.12	99.18	8.69	7.53	493.08	29.997	29.321

Date	Oil Rate (CD) m3/d	Water Rate (CD) m3/d	Water Oil Ratio m3/m3	Water Inj Rate (CD) m3/d	Cum Oil Prod Km3	Cum Water Prod Km3	Cum Water Inj Km3	Voidage Replacement Ratio	Cum Voidage Replacemt Ratio
7/31/2000	0.99	1.69	1.71	62.53	8.72	7.58	495.02	22.807	29.288
8/31/2000	0.64	1.63	2.54	66.65	8.74	7.63	497.09	28.817	29.286
9/30/2000	1.03	1.73	1.69	88.44	8.77	7.68	499.74	31.217	29.296
10/31/2000	0.93	1.79	1.91	84.39	8.80	7.74	502.36	30.283	29.301
11/30/2000	0.94	1.76	1.88	93.72	8.82	7.79	505.17	33.907	29.323
12/31/2000	0.91	1.79	1.96	98.10	8.85	7.85	508.21	35.459	29.354
1/31/2001	0.92	1.79	1.95	101.29	8.88	7.90	511.35	36.631	29.389
2/28/2001	0.94	1.77	1.88	113.26	8.91	7.95	514.52	40.829	29.440
3/31/2001	0.93	1.76	1.89	103.21	8.94	8.01	517.72	37.466	29.479
4/30/2001	0.86	1.73	2.01	104.99	8.96	8.06	520.87	39.496	29.525
5/31/2001	0.93	1.66	1.79	106.77	8.99	8.11	524.18	40.241	29.574
6/30/2001	0.86	1.67	1.93	102.68	9.02	8.16	527.26	39.659	29.618
7/31/2001	0.85	1.75	2.07	104.10	9.04	8.21	530.49	39.250	29.663
8/31/2001	0.82	1.73	2.09	102.61	9.07	8.27	533.67	39.358	29.706
9/30/2001	0.84	1.72	2.05	100.10	9.09	8.32	536.67	38.359	29.744
10/31/2001	0.78	1.76	2.25	101.21	9.12	8.37	539.81	38.897	29.784
11/30/2001	0.72	1.81	2.51	100.78	9.14	8.43	542.83	39.114	29.824
12/31/2001	0.80	1.81	2.26	106.48	9.16	8.48	546.14	39.904	29.870
1/31/2002	0.80	1.86	2.32	109.80	9.19	8.54	549.54	40.437	29.918
2/28/2002	0.84	1.86	2.21	108.52	9.21	8.59	552.58	39.368	29.958
3/31/2002	0.80	1.70	2.11	98.66	9.24	8.65	555.64	38.516	29.994
4/30/2002	0.80	1.72	2.16	96.58	9.26	8.70	558.53	37.613	30.026
5/31/2002	0.81	1.72	2.12	100.01	9.29	8.75	561.63	38.734	30.063
6/30/2002	0.82	1.65	2.00	29.34	9.31	8.80	562.51	11.610	29.989
7/31/2002	0.78	1.62	2.06	28.97	9.34	8.85	563.41	11.807	29.915
8/31/2002	0.77	1.66	2.15	29.35	9.36	8.90	564.32	11.800	29.841
9/30/2002	0.78	1.57	2.02	28.36	9.38	8.95	565.17	11.821	29.773
10/31/2002	0.77	1.70	2.22	29.90	9.41	9.00	566.10	11.886	29.700
11/30/2002	0.79	1.73	2.18	29.47	9.43	9.05	566.98	11.457	29.626
12/31/2002	0.77	1.66	2.15	30.07	9.45	9.11	567.92	12.086	29.556
1/31/2003	0.78	1.68	2.15	29.30	9.48	9.16	568.82	11.614	29.483
2/28/2003	0.76	1.71	2.25	29.55	9.50	9.21	569.65	11.720	29.418
3/31/2003	0.76	1.57	2.07	29.46	9.52	9.25	570.57	12.404	29.354
4/30/2003	0.78	1.58	2.03	29.26	9.55	9.30	571.44	12.130	29.290
5/31/2003	0.80	1.54	1.91	27.76	9.57	9.35	572.30	11.583	29.223
6/30/2003	0.80	1.54	1.93	28.85	9.60	9.40	573.17	12.027	29.160
7/31/2003	0.78	1.55	1.98	24.12	9.62	9.44	573.92	10.085	29.088
8/31/2003	0.78	1.55	1.98	26.67	9.64	9.49	574.74	11.180	29.021
9/30/2003	0.85	1.49	1.76	25.97	9.67	9.54	575.52	10.834	28.956
10/31/2003	0.85	1.53	1.79	26.70	9.70	9.58	576.35	10.928	28.887
11/30/2003	0.91	1.55	1.70	26.35	9.72	9.63	577.14	10.452	28.818
12/31/2003	0.87	1.56	1.79	27.70	9.75	9.68	578.00	11.093	28.749
1/31/2004	0.90	1.51	1.68	27.00	9.78	9.73	578.84	10.926	28.682
2/29/2004	0.91	1.57	1.71	27.31	9.80	9.77	579.63	10.733	28.616
3/31/2004	0.90	1.56	1.74	26.87	9.83	9.82	580.46	10.662	28.547
4/30/2004	0.86	1.61	1.86	28.27	9.86	9.87	581.31	11.192	28.483
5/31/2004	0.90	1.59	1.77	26.96	9.89	9.92	582.14	10.575	28.414
6/30/2004	0.62	1.46	2.36	25.77	9.90	9.96	582.92	12.165	28.363

Date	Oil Rate (CD) m3/d	Water Rate (CD) m3/d	Water Oil Ratio m3/m3	Water Inj Rate (CD) m3/d	Cum Oil Prod Km3	Cum Water Prod Km3	Cum Water Inj Km3	Voidage Replacement Ratio	Cum Voidage Replacemt Ratio
7/31/2004	0.91	1.63	1.79	26.07	9.93	10.01	583.73	10.013	28.292
8/31/2004	0.86	1.55	1.79	25.31	9.96	10.06	584.51	10.235	28.225
9/30/2004	0.93	1.77	1.90	24.78	9.99	10.11	585.25	8.964	28.148
10/31/2004	0.91	1.83	2.01	26.47	10.02	10.17	586.08	9.467	28.070
11/30/2004	0.94	1.85	1.97	27.19	10.04	10.22	586.89	9.547	27.995
12/31/2004	0.92	1.89	2.05	27.61	10.07	10.28	587.75	9.615	27.917
1/31/2005	0.92	1.85	2.01	27.21	10.10	10.34	588.59	9.606	27.841
2/28/2005	0.81	1.69	2.09	28.08	10.12	10.39	589.38	10.973	27.784
3/31/2005	0.99	1.67	1.69	27.23	10.15	10.44	590.22	9.967	27.713
4/30/2005	0.89	1.66	1.87	27.74	10.18	10.49	591.05	10.650	27.651
5/31/2005	0.80	1.13	1.41	27.43	10.21	10.52	591.90	13.787	27.611
6/30/2005	0.85	1.19	1.40	27.50	10.23	10.56	592.73	13.138	27.569
7/31/2005	0.82	1.22	1.48	26.23	10.26	10.60	593.54	12.489	27.523
8/31/2005	0.83	1.23	1.48	27.44	10.28	10.64	594.39	12.920	27.479
9/30/2005	0.74	1.16	1.56	26.28	10.30	10.67	595.18	13.449	27.441
10/31/2005	0.80	1.18	1.47	26.31	10.33	10.71	596.00	12.932	27.399
11/30/2005	0.79	1.23	1.56	27.46	10.35	10.74	596.82	13.241	27.358
12/31/2005	0.81	1.25	1.54	28.71	10.38	10.78	597.71	13.542	27.317
1/31/2006	0.81	1.22	1.51	27.86	10.40	10.82	598.57	13.411	27.276
2/28/2006	0.86	1.79	2.08	29.54	10.43	10.87	599.40	10.883	27.220
3/31/2006	0.82	1.22	1.49	27.13	10.45	10.91	600.24	12.981	27.178
4/30/2006	0.84	1.26	1.50	23.66	10.48	10.95	600.95	10.981	27.131
5/31/2006	0.77	0.99	1.28	25.84	10.50	10.98	601.75	14.242	27.098
6/30/2006	0.81	1.25	1.55	25.63	10.53	11.01	602.52	12.109	27.055
7/31/2006	0.75	1.03	1.36	25.05	10.55	11.05	603.30	13.691	27.021
8/31/2006	0.08	1.73	22.12	25.96	10.55	11.10	604.10	14.309	26.989
9/30/2006	0.47	1.07	2.26	25.78	10.57	11.13	604.88	16.383	26.967
10/31/2006	1.03	0.89	0.87	108.45	10.60	11.16	608.24	54.638	27.043
11/30/2006	0.94	0.61	0.65	106.97	10.63	11.18	611.45	66.233	27.127
12/31/2006	0.92	0.60	0.65	108.87	10.65	11.20	614.82	68.942	27.218
1/31/2007	0.93	1.81	1.96		10.68	11.25	614.82	0.000	27.113
2/28/2007	0.91	1.83	2.00		10.71	11.30	614.82	0.000	27.020
3/31/2007	0.90	1.83	2.03	106.61	10.74	11.36	618.13	38.125	27.062
4/30/2007	0.90	1.83	2.03	106.13	10.76	11.41	621.31	38.065	27.102
5/31/2007	0.90	1.82	2.03	105.71	10.79	11.47	624.59	38.025	27.143
6/30/2007	0.85	2.03	2.38	95.17	10.82	11.53	627.44	32.304	27.163
7/31/2007	0.87	1.81	2.07	101.87	10.84	11.59	630.60	37.129	27.199
8/31/2007	0.85	1.79	2.10	103.06	10.87	11.64	633.80	38.099	27.239
9/30/2007	0.86	1.81	2.12	104.57	10.90	11.70	636.93	38.275	27.277
10/31/2007	0.73	1.49	2.03	212.06	10.92	11.74	643.51	93.343	27.476
11/30/2007	0.83	1.90	2.29	224.53	10.94	11.80	650.24	80.721	27.665
12/31/2007	0.85	1.91	2.25		10.97	11.86	650.24	0.000	27.562
1/31/2008	0.86	1.92	2.24	112.39	11.00	11.92	653.73	39.512	27.607
2/29/2008	0.87	1.96	2.26		11.02	11.98	653.73	0.000	27.509
3/31/2008	0.88	1.97	2.24	115.16	11.05	12.04	657.30	39.649	27.555
4/30/2008	0.87	1.97	2.26	112.50	11.08	12.10	660.67	38.776	27.596
5/31/2008	0.85	1.90	2.23	113.13	11.10	12.16	664.18	40.202	27.642
6/30/2008	0.85	1.96	2.31	103.77	11.13	12.21	667.29	36.192	27.672

Date	Oil Rate (CD) m3/d	Water Rate (CD) m3/d	Water Oil Ratio m3/m3	Water Inj Rate (CD) m3/d	Cum Oil Prod Km3	Cum Water Prod Km3	Cum Water Inj Km3	Voidage Replacement Ratio	Cum Voidage Replacemt Ratio
7/31/2008	0.86	1.90	2.21	105.13	11.15	12.27	670.55	37.410	27.707
8/31/2008	0.85	1.91	2.24	105.52	11.18	12.33	673.82	37.500	27.743
9/30/2008	0.85	1.92	2.27	10.14	11.21	12.39	674.13	3.584	27.658
10/31/2008	0.82	1.63	2.00	10.06	11.23	12.44	674.44	4.018	27.583
11/30/2008	0.68	2.24	3.31	107.63	11.25	12.51	677.67	36.286	27.615
12/31/2008	0.69	2.20	3.20	106.62	11.27	12.58	680.97	36.309	27.647
1/31/2009	0.68	2.20	3.25	107.60	11.29	12.64	684.31	36.878	27.681
2/28/2009	0.68	2.20	3.23	107.75	11.31	12.71	687.33	36.735	27.711
3/31/2009	0.66	2.24	3.37	111.54	11.33	12.78	690.78	37.850	27.748
4/30/2009	0.68	2.24	3.31	110.77	11.35	12.84	694.11	37.365	27.782
5/31/2009	0.65	2.20	3.39	107.76	11.37	12.91	697.45	37.203	27.816
6/30/2009	0.66	2.20	3.36	109.24	11.39	12.98	700.72	37.642	27.850
7/31/2009	0.65	2.18	3.36	108.35	11.41	13.04	704.08	37.753	27.885
8/31/2009	0.61	2.03	3.31	109.61	11.43	13.11	707.48	40.892	27.928
9/30/2009	0.59	1.98	3.34	109.22	11.45	13.17	710.76	41.830	27.970
10/31/2009	0.58	1.95	3.37	106.67	11.47	13.23	714.06	41.492	28.013
11/30/2009	0.60	1.82	3.03	100.12	11.49	13.28	717.07	40.769	28.049
12/31/2009	0.59	1.88	3.18	101.64	11.50	13.34	720.22	40.383	28.087
1/31/2010	0.60	1.92	3.21	102.24	11.52	13.40	723.39	39.925	28.123
2/28/2010	0.60	1.93	3.19	103.43	11.54	13.45	726.28	40.196	28.157
3/31/2010	0.59	1.93	3.30	104.67	11.56	13.51	729.53	40.886	28.196
4/30/2010	0.60	1.91	3.16	103.65	11.58	13.57	732.64	40.551	28.233
5/31/2010	0.60	1.86	3.09	111.80	11.59	13.63	736.10	44.579	28.282
6/30/2010	0.61	1.94	3.17	102.73	11.61	13.69	739.19	39.639	28.315
7/31/2010	0.64	1.93	3.03	100.21	11.63	13.75	742.29	38.400	28.347
8/31/2010	0.66	1.96	2.97	103.74	11.65	13.81	745.51	38.925	28.380
9/30/2010	0.65	1.98	3.04	103.00	11.67	13.87	748.60	38.537	28.411
10/31/2010	0.66	1.97	2.99	106.05	11.69	13.93	751.89	39.599	28.446
11/30/2010	0.66	1.94	2.95	104.68	11.71	13.99	755.03	39.693	28.479
12/31/2010	0.66	2.02	3.05	107.51	11.73	14.05	758.36	39.420	28.514
1/31/2011	0.65	2.04	3.12	106.25	11.75	14.11	761.65	38.802	28.547
2/28/2011	0.66	2.05	3.13	110.30	11.77	14.17	764.74	40.058	28.580
3/31/2011	0.57	2.09	3.67	111.32	11.79	14.23	768.19	41.177	28.619
4/30/2011	0.57	2.03	3.52	109.65	11.81	14.29	771.48	41.511	28.657
5/31/2011	0.57	1.96	3.47	106.58	11.82	14.36	774.79	41.486	28.695
6/30/2011	0.47	1.84	3.95	94.88	11.84	14.41	777.63	40.668	28.726
7/31/2011	0.57	1.95	3.43	81.08	11.86	14.47	780.15	31.768	28.735
8/31/2011	0.60	1.96	3.27	80.53	11.87	14.53	782.64	31.035	28.742
9/30/2011	0.55	1.54	2.78	60.84	11.89	14.58	784.47	28.596	28.742
10/31/2011	0.50	1.83	3.68	79.68	11.91	14.63	786.94	33.806	28.755
11/30/2011	0.46	1.72	3.75	78.92	11.92	14.69	789.30	35.747	28.772
12/31/2011	0.45	1.71	3.78	80.08	11.93	14.74	791.79	36.520	28.791
1/31/2012	0.46	1.65	3.58	79.54	11.95	14.79	794.25	37.069	28.811
2/29/2012	0.82	1.96	2.37	99.04	11.97	14.85	797.13	34.929	28.829
3/31/2012	0.66	2.05	3.12	108.29	11.99	14.91	800.48	39.384	28.862
4/30/2012	0.62	2.04	3.31	106.94	12.01	14.97	803.69	39.629	28.893
5/31/2012	0.59	2.04	3.48	105.88	12.03	15.03	806.97	39.720	28.925
6/30/2012	0.64	2.03	3.20	105.69	12.05	15.10	810.14	38.952	28.954

Date	Oil Rate (CD) m3/d	Water Rate (CD) m3/d	Water Oil Ratio m3/m3	Water Inj Rate (CD) m3/d	Cum Oil Prod Km3	Cum Water Prod Km3	Cum Water Inj Km3	Voidage Replacement Ratio	Cum Voidage Replacemt Ratio
7/31/2012	0.52	1.88	3.64	102.00	12.06	15.15	813.31	41.874	28.989
8/31/2012	0.47	2.13	4.58		12.08	15.22	813.31	0.000	28.905
9/30/2012	0.47	2.13	4.53		12.09	15.28	813.31	0.000	28.824
10/31/2012	0.42	1.95	4.70		12.11	15.34	813.31	0.000	28.748
11/30/2012	0.47	2.15	4.52		12.12	15.41	813.31	0.000	28.668
12/31/2012	0.47	2.10	4.48		12.13	15.47	813.31	0.000	28.586

Oil Formation Vol Factor : 1.07100 m3/m3

Water Formation Vol Factor : 1.00150 m3/m3

Water / Oil Ratio : 2.36 m3/m3

Pattern: 00/07-35-009-28Inj Set: DalyUnit#4

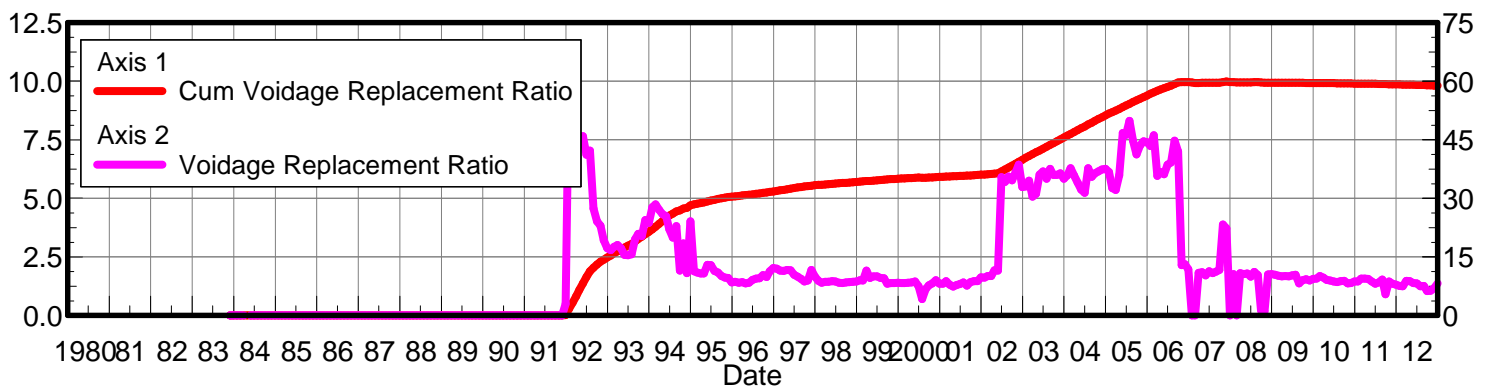
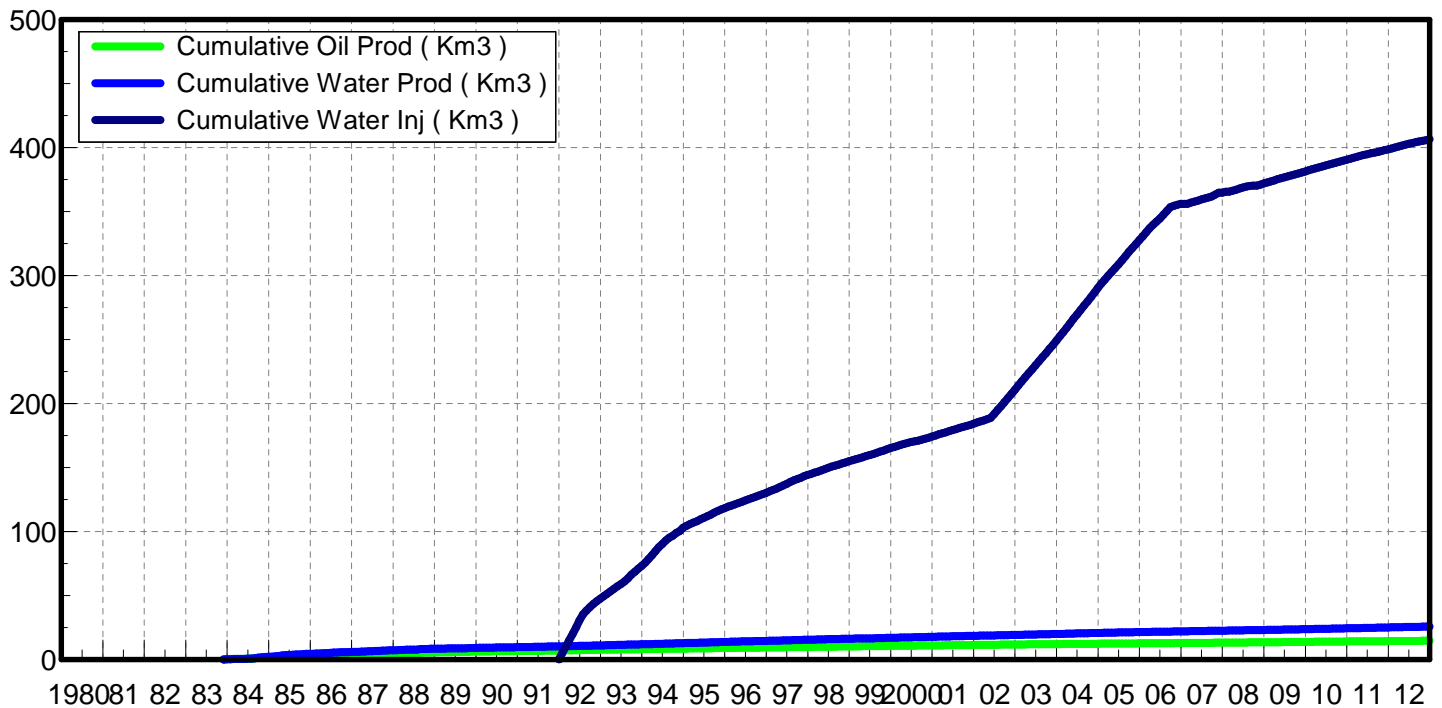
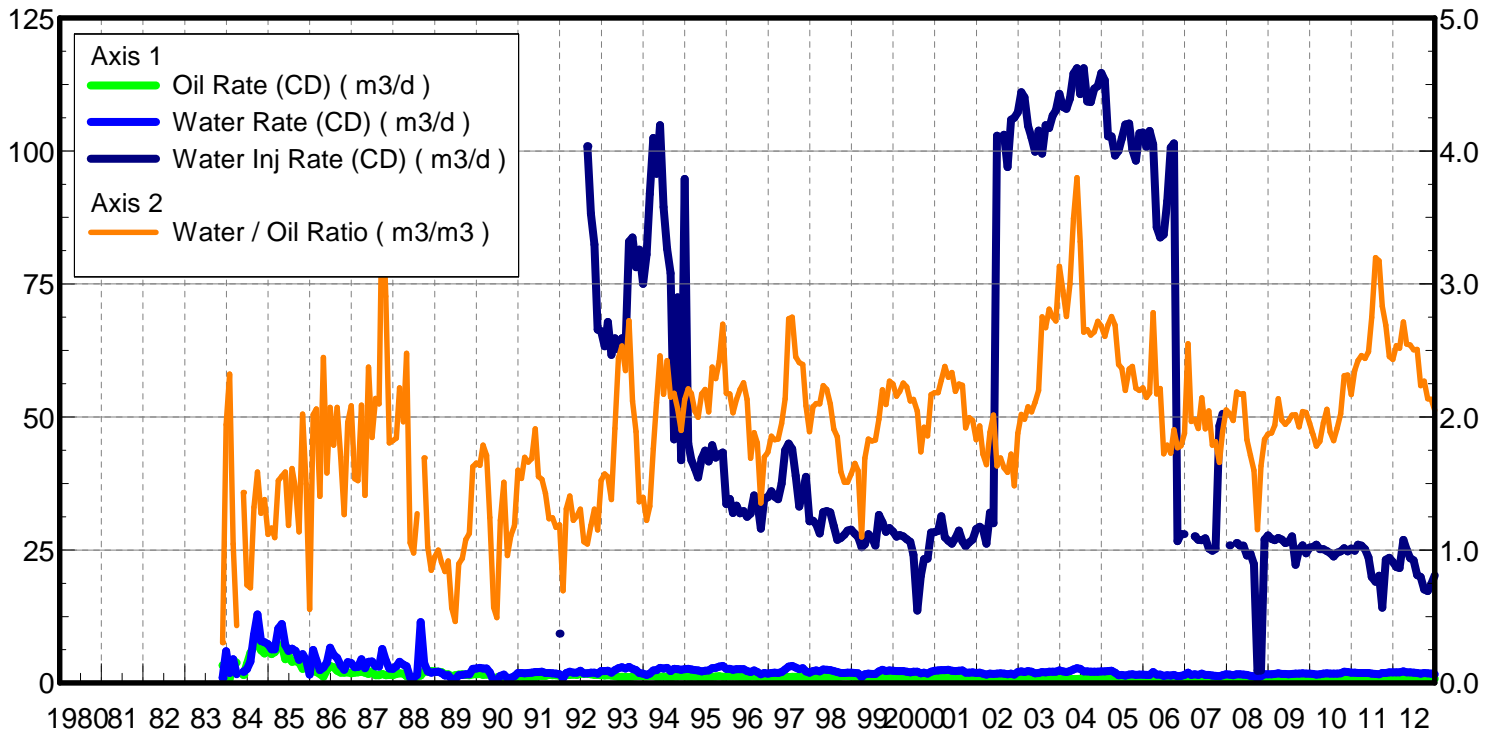
May 23, 2013

Operator: Zargon_O&G_Ltd

Oil Rate (CD) : 0.73 m3/d

Water Rate (CD) : 1.71 m3/d

Water Inj Rate (CD) : 15.45 m3/d



Date	Oil Rate (CD) m3/d	Water Rate (CD) m3/d	Water Oil Ratio m3/m3	Water Inj Rate (CD) m3/d	Cum Oil Prod Km3	Cum Water Prod Km3	Cum Water Inj Km3	Voidage Replacement Ratio	Cum Voidage Replacemt Ratio
11/30/1983	3.33	1.01	0.30		0.10	0.03	0.00	0.000	0.000
12/31/1983	3.07	5.96	1.94		0.20	0.22	0.00	0.000	0.000
1/31/1984	0.82	1.91	2.32		0.22	0.27	0.00	0.000	0.000
2/29/1984	4.28	4.48	1.05		0.34	0.40	0.00	0.000	0.000
3/31/1984	3.82	1.65	0.43		0.46	0.46	0.00	0.000	0.000
5/31/1984	1.50	2.15	1.43		0.51	0.52	0.00	0.000	0.000
6/30/1984	3.57	2.63	0.74		0.62	0.60	0.00	0.000	0.000
7/31/1984	5.68	4.07	0.72		0.79	0.73	0.00	0.000	0.000
8/31/1984	6.85	9.05	1.32		1.00	1.01	0.00	0.000	0.000
9/30/1984	8.14	12.91	1.59		1.25	1.39	0.00	0.000	0.000
10/31/1984	6.17	7.88	1.28		1.44	1.64	0.00	0.000	0.000
11/30/1984	5.57	7.68	1.38		1.61	1.87	0.00	0.000	0.000
12/31/1984	6.56	7.33	1.12		1.81	2.10	0.00	0.000	0.000
1/31/1985	5.42	6.31	1.16		1.98	2.29	0.00	0.000	0.000
2/28/1985	5.78	6.31	1.09		2.14	2.47	0.00	0.000	0.000
3/31/1985	6.75	10.27	1.52		2.35	2.79	0.00	0.000	0.000
4/30/1985	7.15	11.12	1.56		2.56	3.12	0.00	0.000	0.000
5/31/1985	4.49	7.12	1.59		2.70	3.34	0.00	0.000	0.000
6/30/1985	5.12	6.06	1.18		2.86	3.52	0.00	0.000	0.000
7/31/1985	3.99	6.44	1.61		2.98	3.72	0.00	0.000	0.000
8/31/1985	4.13	6.03	1.46		3.11	3.91	0.00	0.000	0.000
9/30/1985	3.85	4.38	1.14		3.22	4.04	0.00	0.000	0.000
10/31/1985	2.69	5.43	2.02		3.31	4.21	0.00	0.000	0.000
11/30/1985	2.90	4.35	1.50		3.39	4.34	0.00	0.000	0.000
12/31/1985	2.84	1.57	0.55		3.48	4.39	0.00	0.000	0.000
1/31/1986	3.07	6.19	2.02		3.58	4.58	0.00	0.000	0.000
2/28/1986	2.07	4.26	2.06		3.64	4.70	0.00	0.000	0.000
3/31/1986	1.73	2.43	1.40		3.69	4.78	0.00	0.000	0.000
4/30/1986	1.19	2.92	2.45		3.73	4.86	0.00	0.000	0.000
5/31/1986	2.46	3.88	1.58		3.80	4.98	0.00	0.000	0.000
6/30/1986	3.20	6.62	2.07		3.90	5.18	0.00	0.000	0.000
7/31/1986	2.99	5.34	1.79		3.99	5.35	0.00	0.000	0.000
8/31/1986	2.28	4.73	2.07		4.06	5.49	0.00	0.000	0.000
9/30/1986	1.96	3.34	1.70		4.12	5.59	0.00	0.000	0.000
10/31/1986	1.95	2.47	1.27		4.18	5.67	0.00	0.000	0.000
11/30/1986	2.01	3.94	1.96		4.24	5.79	0.00	0.000	0.000
12/31/1986	1.81	3.77	2.08		4.30	5.91	0.00	0.000	0.000
1/31/1987	1.94	2.97	1.54		4.36	6.00	0.00	0.000	0.000
2/28/1987	1.99	3.04	1.52		4.41	6.08	0.00	0.000	0.000
3/31/1987	2.13	4.45	2.09		4.48	6.22	0.00	0.000	0.000
4/30/1987	1.98	2.79	1.41		4.54	6.31	0.00	0.000	0.000
5/31/1987	1.69	4.01	2.37		4.59	6.43	0.00	0.000	0.000
6/30/1987	2.19	4.04	1.85		4.66	6.55	0.00	0.000	0.000
7/31/1987	1.47	3.13	2.14		4.70	6.65	0.00	0.000	0.000
8/31/1987	1.49	3.12	2.10		4.75	6.74	0.00	0.000	0.000
9/30/1987	1.72	6.38	3.70		4.80	6.94	0.00	0.000	0.000
10/31/1987	1.45	4.23	2.91		4.84	7.07	0.00	0.000	0.000
11/30/1987	1.52	2.74	1.80		4.89	7.15	0.00	0.000	0.000

Date	Oil Rate (CD) m3/d	Water Rate (CD) m3/d	Water Oil Ratio m3/m3	Water Inj Rate (CD) m3/d	Cum Oil Prod Km3	Cum Water Prod Km3	Cum Water Inj Km3	Voidage Replacement Ratio	Cum Voidage Replacemt Ratio
12/31/1987	1.45	2.65	1.82		4.93	7.23	0.00	0.000	0.000
1/31/1988	1.70	3.13	1.84		4.99	7.33	0.00	0.000	0.000
2/29/1988	1.81	4.02	2.22		5.04	7.44	0.00	0.000	0.000
3/31/1988	1.77	3.47	1.96		5.09	7.55	0.00	0.000	0.000
4/30/1988	1.27	3.15	2.48		5.13	7.65	0.00	0.000	0.000
5/31/1988	0.99	1.05	1.05		5.16	7.68	0.00	0.000	0.000
6/30/1988	0.99	0.97	0.98		5.19	7.71	0.00	0.000	0.000
7/31/1988	1.22	1.55	1.27		5.23	7.76	0.00	0.000	0.000
8/31/1988	1.43	11.44	7.99		5.28	8.11	0.00	0.000	0.000
9/30/1988	2.18	3.70	1.69		5.34	8.22	0.00	0.000	0.000
10/31/1988	2.12	2.16	1.02		5.41	8.29	0.00	0.000	0.000
11/30/1988	2.28	1.93	0.85		5.48	8.35	0.00	0.000	0.000
12/31/1988	2.20	2.08	0.95		5.54	8.41	0.00	0.000	0.000
1/31/1989	2.13	2.13	1.00		5.61	8.48	0.00	0.000	0.000
2/28/1989	2.06	1.87	0.91		5.67	8.53	0.00	0.000	0.000
3/31/1989	1.67	1.40	0.84		5.72	8.57	0.00	0.000	0.000
4/30/1989	1.63	1.50	0.92		5.77	8.62	0.00	0.000	0.000
5/31/1989	1.29	0.73	0.56		5.81	8.64	0.00	0.000	0.000
6/30/1989	1.47	0.68	0.46		5.85	8.66	0.00	0.000	0.000
7/31/1989	1.61	1.44	0.90		5.90	8.71	0.00	0.000	0.000
8/31/1989	1.62	1.52	0.94		5.95	8.75	0.00	0.000	0.000
9/30/1989	1.50	1.62	1.08		6.00	8.80	0.00	0.000	0.000
10/31/1989	1.44	1.62	1.12		6.04	8.85	0.00	0.000	0.000
11/30/1989	1.65	2.68	1.63		6.09	8.93	0.00	0.000	0.000
12/31/1989	1.67	2.76	1.65		6.14	9.02	0.00	0.000	0.000
1/31/1990	1.73	2.83	1.64		6.20	9.11	0.00	0.000	0.000
2/28/1990	1.53	2.73	1.79		6.24	9.18	0.00	0.000	0.000
3/31/1990	1.60	2.73	1.71		6.29	9.27	0.00	0.000	0.000
4/30/1990	1.62	2.02	1.24		6.34	9.33	0.00	0.000	0.000
5/31/1990	0.66	0.37	0.57		6.36	9.34	0.00	0.000	0.000
6/30/1990	1.02	0.50	0.49		6.39	9.35	0.00	0.000	0.000
7/31/1990	1.12	1.37	1.22		6.42	9.40	0.00	0.000	0.000
8/31/1990	1.07	1.61	1.51		6.46	9.45	0.00	0.000	0.000
9/30/1990	0.99	0.95	0.96		6.49	9.47	0.00	0.000	0.000
10/31/1990	0.90	1.00	1.11		6.51	9.51	0.00	0.000	0.000
11/30/1990	1.09	1.29	1.18		6.55	9.54	0.00	0.000	0.000
12/31/1990	1.20	1.92	1.60		6.58	9.60	0.00	0.000	0.000
1/31/1991	1.24	1.91	1.54		6.62	9.66	0.00	0.000	0.000
2/28/1991	1.08	1.83	1.70		6.65	9.71	0.00	0.000	0.000
3/31/1991	1.13	1.88	1.66		6.69	9.77	0.00	0.000	0.000
4/30/1991	1.15	1.93	1.69		6.72	9.83	0.00	0.000	0.000
5/31/1991	1.09	2.09	1.91		6.76	9.90	0.00	0.000	0.000
6/30/1991	1.34	2.08	1.55		6.80	9.96	0.00	0.000	0.000
7/31/1991	1.37	2.10	1.53		6.84	10.02	0.00	0.000	0.000
8/31/1991	1.32	1.88	1.43		6.88	10.08	0.00	0.000	0.000
9/30/1991	1.51	1.87	1.24		6.92	10.14	0.00	0.000	0.000
10/31/1991	1.48	1.84	1.24		6.97	10.19	0.00	0.000	0.000
11/30/1991	1.49	1.74	1.17		7.02	10.25	0.00	0.000	0.000

Date	Oil Rate (CD) m3/d	Water Rate (CD) m3/d	Water Oil Ratio m3/m3	Water Inj Rate (CD) m3/d	Cum Oil Prod Km3	Cum Water Prod Km3	Cum Water Inj Km3	Voidage Replacement Ratio	Cum Voidage Replacemt Ratio
12/31/1991	1.37	1.63	1.19	9.26	7.06	10.30	0.29	2.998	0.016
1/31/1992	1.37	0.95	0.69	156.77	7.10	10.33	5.15	64.710	0.287
2/29/1992	1.46	1.91	1.31	161.45	7.14	10.38	9.83	46.500	0.545
3/31/1992	1.51	2.13	1.41	168.55	7.19	10.45	15.05	45.042	0.830
4/30/1992	1.60	1.96	1.22	165.93	7.24	10.51	20.03	45.115	1.098
5/31/1992	1.55	1.94	1.25	165.03	7.29	10.57	25.15	45.935	1.370
6/30/1992	1.77	2.32	1.31	173.57	7.34	10.64	30.36	41.197	1.642
7/31/1992	1.70	1.81	1.06	153.10	7.39	10.69	35.10	42.250	1.888
8/31/1992	1.74	1.82	1.05	100.87	7.45	10.75	38.23	27.432	2.043
9/30/1992	1.62	1.92	1.19	88.20	7.49	10.81	40.87	24.137	2.172
10/31/1992	1.51	1.97	1.31	82.42	7.54	10.87	43.43	22.988	2.294
11/30/1992	1.55	1.79	1.15	66.43	7.59	10.92	45.42	19.268	2.386
12/31/1992	1.48	2.25	1.52	66.10	7.63	10.99	47.47	17.236	2.478
1/31/1993	1.43	2.25	1.57	63.29	7.68	11.06	49.43	16.773	2.565
2/28/1993	1.48	2.29	1.55	67.86	7.72	11.12	51.33	17.528	2.649
3/31/1993	1.40	1.93	1.38	61.68	7.76	11.18	53.24	18.028	2.733
4/30/1993	1.26	2.41	1.91	64.80	7.80	11.26	55.19	17.265	2.816
5/31/1993	1.15	2.82	2.44	62.71	7.84	11.34	57.13	15.490	2.897
6/30/1993	1.17	2.96	2.53	64.80	7.87	11.43	59.08	15.403	2.976
7/31/1993	1.17	2.74	2.35	62.71	7.91	11.52	61.02	15.714	3.055
8/31/1993	1.12	3.05	2.72	82.97	7.94	11.61	63.59	19.516	3.163
9/30/1993	1.25	2.65	2.12	83.73	7.98	11.69	66.11	20.967	3.269
10/31/1993	1.30	2.45	1.89	78.13	8.02	11.77	68.53	20.376	3.369
11/30/1993	1.37	1.87	1.36	81.47	8.06	11.82	70.97	24.446	3.472
12/31/1993	1.28	1.79	1.40	75.00	8.10	11.88	73.30	23.722	3.568
1/31/1994	1.27	1.55	1.22	80.55	8.14	11.93	75.79	27.728	3.674
2/28/1994	1.35	1.79	1.33	91.93	8.18	11.98	78.37	28.485	3.782
3/31/1994	1.34	2.36	1.76	102.42	8.22	12.05	81.54	27.062	3.913
4/30/1994	1.16	2.45	2.11	95.70	8.25	12.12	84.41	25.919	4.029
5/31/1994	1.17	2.87	2.46	104.84	8.29	12.21	87.66	25.458	4.159
6/30/1994	1.25	2.71	2.17	89.43	8.33	12.29	90.35	22.110	4.262
7/31/1994	1.17	2.84	2.42	81.61	8.36	12.38	92.88	19.905	4.355
8/31/1994	1.05	2.25	2.15	77.00	8.40	12.45	95.26	22.897	4.445
9/30/1994	1.23	2.68	2.18	45.82	8.43	12.53	96.64	11.476	4.484
10/31/1994	1.25	2.59	2.06	72.50	8.47	12.61	98.89	18.453	4.563
11/30/1994	1.30	2.48	1.90	41.90	8.51	12.69	100.14	10.822	4.596
12/31/1994	1.23	2.61	2.13	94.72	8.55	12.77	103.08	24.159	4.705
1/31/1995	1.21	2.68	2.21	45.04	8.59	12.85	104.47	11.321	4.742
2/28/1995	1.17	2.54	2.17	41.89	8.62	12.92	105.65	11.046	4.772
3/31/1995	1.20	2.45	2.04	40.33	8.66	13.00	106.90	10.784	4.803
4/30/1995	1.17	2.35	2.00	38.64	8.69	13.07	108.06	10.728	4.832
5/31/1995	1.00	2.18	2.17	42.20	8.72	13.14	109.36	12.974	4.869
6/30/1995	1.03	2.28	2.21	43.67	8.75	13.20	110.68	12.899	4.905
7/31/1995	1.17	2.39	2.04	41.62	8.79	13.28	111.97	11.437	4.937
8/31/1995	1.18	2.80	2.38	44.70	8.83	13.37	113.35	10.992	4.971
9/30/1995	1.25	2.87	2.29	42.39	8.86	13.45	114.62	10.070	4.999
10/31/1995	1.27	3.08	2.42	42.96	8.90	13.55	115.95	9.670	5.027
11/30/1995	1.19	3.22	2.70	43.35	8.94	13.64	117.26	9.638	5.053

Date	Oil Rate (CD) m3/d	Water Rate (CD) m3/d	Water Oil Ratio m3/m3	Water Inj Rate (CD) m3/d	Cum Oil Prod Km3	Cum Water Prod Km3	Cum Water Inj Km3	Voidage Replacement Ratio	Cum Voidage Replacemt Ratio
12/31/1995	1.22	2.66	2.18	33.66	8.98	13.73	118.30	8.486	5.072
1/31/1996	1.24	2.70	2.17	34.58	9.02	13.81	119.37	8.600	5.090
2/29/1996	1.23	2.49	2.03	31.98	9.05	13.88	120.30	8.396	5.106
3/31/1996	1.22	2.61	2.13	33.34	9.09	13.96	121.33	8.517	5.123
4/30/1996	1.18	2.61	2.21	31.87	9.12	14.04	122.29	8.234	5.138
5/31/1996	1.16	2.62	2.26	32.34	9.16	14.12	123.29	8.383	5.155
6/30/1996	1.07	2.27	2.13	31.22	9.19	14.19	124.23	9.138	5.172
7/31/1996	1.22	2.06	1.69	31.85	9.23	14.25	125.21	9.489	5.190
8/31/1996	1.25	2.36	1.88	35.24	9.27	14.33	126.31	9.518	5.211
9/30/1996	1.14	2.06	1.81	34.07	9.30	14.39	127.33	10.363	5.232
10/31/1996	1.21	1.64	1.35	29.04	9.34	14.44	128.23	9.879	5.249
11/30/1996	1.11	1.88	1.70	34.80	9.37	14.50	129.27	11.340	5.272
12/31/1996	1.03	1.78	1.74	34.89	9.41	14.55	130.35	12.118	5.297
1/31/1997	1.02	1.90	1.86	36.04	9.44	14.61	131.47	12.031	5.322
2/28/1997	1.05	1.93	1.83	35.03	9.47	14.66	132.45	11.487	5.343
3/31/1997	1.04	1.91	1.83	34.56	9.50	14.72	133.52	11.406	5.366
4/30/1997	1.07	2.08	1.95	37.48	9.53	14.79	134.65	11.634	5.390
5/31/1997	1.18	2.52	2.14	43.73	9.57	14.86	136.00	11.544	5.419
6/30/1997	1.13	3.10	2.74	45.03	9.60	14.96	137.35	10.440	5.445
7/31/1997	1.16	3.18	2.75	43.96	9.64	15.06	138.72	9.951	5.469
8/31/1997	1.18	2.90	2.45	38.94	9.67	15.15	139.92	9.355	5.489
9/30/1997	1.09	2.63	2.41	33.16	9.71	15.23	140.92	8.720	5.503
10/31/1997	1.16	2.78	2.40	35.99	9.74	15.31	142.03	8.945	5.520
11/30/1997	1.05	2.19	2.08	38.75	9.77	15.38	143.20	11.666	5.544
12/31/1997	1.03	1.96	1.89	30.38	9.81	15.44	144.14	9.921	5.560
1/31/1998	1.09	2.26	2.08	30.52	9.84	15.51	145.08	8.917	5.573
2/28/1998	1.13	2.37	2.10	29.86	9.87	15.57	145.92	8.350	5.584
3/31/1998	1.03	2.17	2.10	28.13	9.90	15.64	146.79	8.601	5.596
4/30/1998	1.13	2.53	2.24	32.12	9.94	15.72	147.76	8.600	5.608
5/31/1998	1.12	2.48	2.21	32.35	9.97	15.79	148.76	8.793	5.622
6/30/1998	1.16	2.43	2.10	32.10	10.01	15.87	149.72	8.753	5.635
7/31/1998	1.19	2.26	1.91	29.51	10.04	15.94	150.64	8.362	5.646
8/31/1998	1.11	2.05	1.85	26.88	10.08	16.00	151.47	8.304	5.656
9/30/1998	1.21	1.92	1.59	27.25	10.12	16.06	152.29	8.502	5.667
10/31/1998	1.26	1.90	1.51	27.85	10.15	16.12	153.15	8.583	5.677
11/30/1998	1.29	1.95	1.51	28.63	10.19	16.18	154.01	8.599	5.688
12/31/1998	1.25	1.96	1.57	28.82	10.23	16.24	154.90	8.730	5.700
1/31/1999	1.14	1.88	1.65	28.03	10.27	16.29	155.77	9.062	5.711
2/28/1999	1.15	1.83	1.60	27.47	10.30	16.35	156.54	8.987	5.722
3/31/1999	1.02	1.12	1.10	25.54	10.33	16.38	157.33	11.530	5.736
4/30/1999	0.98	1.66	1.69	26.06	10.36	16.43	158.11	9.605	5.748
5/31/1999	0.96	1.76	1.83	27.97	10.39	16.49	158.98	10.014	5.761
6/30/1999	0.94	1.72	1.82	27.36	10.42	16.54	159.80	10.019	5.774
7/31/1999	0.93	1.69	1.83	25.83	10.45	16.59	160.60	9.623	5.785
8/31/1999	1.09	2.16	1.98	31.60	10.48	16.66	161.58	9.508	5.799
9/30/1999	1.13	2.49	2.21	30.19	10.51	16.73	162.49	8.170	5.808
10/31/1999	1.09	2.27	2.09	28.43	10.55	16.80	163.37	8.271	5.818
11/30/1999	1.05	2.39	2.27	29.12	10.58	16.87	164.24	8.292	5.827

Date	Oil Rate (CD) m3/d	Water Rate (CD) m3/d	Water Oil Ratio m3/m3	Water Inj Rate (CD) m3/d	Cum Oil Prod Km3	Cum Water Prod Km3	Cum Water Inj Km3	Voidage Replacement Ratio	Cum Voidage Replacemt Ratio
12/31/1999	1.02	2.30	2.25	28.47	10.61	16.94	165.13	8.374	5.836
1/31/2000	1.03	2.22	2.16	27.48	10.64	17.01	165.98	8.264	5.845
2/29/2000	1.03	2.25	2.19	27.81	10.67	17.08	166.78	8.292	5.854
3/31/2000	0.99	2.22	2.25	27.54	10.70	17.15	167.64	8.401	5.863
4/30/2000	0.97	2.16	2.23	27.03	10.73	17.21	168.45	8.462	5.871
5/31/2000	0.95	2.02	2.12	26.55	10.76	17.27	169.27	8.736	5.881
6/30/2000	1.01	2.15	2.13	24.09	10.79	17.34	170.00	7.464	5.886
7/31/2000	1.04	2.12	2.04	13.60	10.83	17.41	170.42	4.203	5.880
8/31/2000	1.06	1.85	1.74	20.15	10.86	17.46	171.04	6.760	5.883
9/30/2000	1.01	1.94	1.92	23.29	10.89	17.52	171.74	7.737	5.889
10/31/2000	0.97	1.79	1.86	23.35	10.92	17.58	172.46	8.260	5.896
11/30/2000	0.97	2.10	2.17	28.28	10.95	17.64	173.31	9.006	5.906
12/31/2000	1.07	2.33	2.18	28.32	10.98	17.71	174.19	8.160	5.914
1/31/2001	1.08	2.36	2.18	28.58	11.01	17.78	175.08	8.132	5.922
2/28/2001	1.07	2.42	2.28	31.38	11.04	17.85	175.95	8.806	5.932
3/31/2001	1.01	2.40	2.38	27.40	11.07	17.93	176.80	7.880	5.939
4/30/2001	1.08	2.47	2.30	26.71	11.11	18.00	177.61	7.377	5.944
5/31/2001	0.99	2.31	2.34	26.17	11.14	18.07	178.42	7.779	5.951
6/30/2001	1.03	2.26	2.19	27.22	11.17	18.14	179.23	8.088	5.958
7/31/2001	1.02	2.29	2.25	28.67	11.20	18.21	180.12	8.501	5.967
8/31/2001	1.05	2.34	2.24	26.61	11.23	18.28	180.95	7.685	5.973
9/30/2001	1.00	1.93	1.92	25.73	11.26	18.34	181.72	8.570	5.980
10/31/2001	0.98	1.95	1.99	26.40	11.29	18.40	182.54	8.832	5.989
11/30/2001	1.01	1.99	1.97	26.98	11.32	18.46	183.35	8.794	5.997
12/31/2001	1.02	1.87	1.83	28.94	11.35	18.52	184.24	9.788	6.009
1/31/2002	1.00	1.94	1.93	29.36	11.39	18.58	185.15	9.734	6.020
2/28/2002	1.02	1.77	1.72	28.94	11.41	18.63	185.96	10.115	6.031
3/31/2002	0.95	1.57	1.64	26.21	11.44	18.68	186.78	10.138	6.041
4/30/2002	0.93	1.76	1.88	32.05	11.47	18.73	187.74	11.623	6.056
5/31/2002	0.85	1.70	2.01	30.02	11.50	18.78	188.67	11.511	6.071
6/30/2002	1.08	1.75	1.63	102.88	11.53	18.84	191.76	35.441	6.153
7/31/2002	1.08	1.83	1.69	102.39	11.56	18.89	194.93	34.200	6.236
8/31/2002	1.08	1.74	1.62	103.07	11.60	18.95	198.12	35.613	6.320
9/30/2002	1.05	1.67	1.58	96.96	11.63	19.00	201.03	34.631	6.396
10/31/2002	1.04	1.78	1.72	105.88	11.66	19.05	204.32	36.641	6.482
11/30/2002	1.08	1.60	1.48	106.23	11.69	19.10	207.50	38.655	6.565
12/31/2002	1.11	2.08	1.88	107.28	11.73	19.16	210.83	32.893	6.649
1/31/2003	1.09	2.20	2.02	111.05	11.76	19.23	214.27	33.066	6.736
2/28/2003	1.04	2.07	1.98	110.09	11.79	19.29	217.35	34.537	6.814
3/31/2003	1.09	2.27	2.08	104.73	11.83	19.36	220.60	30.435	6.892
4/30/2003	1.06	2.15	2.04	102.51	11.86	19.43	223.68	31.196	6.967
5/31/2003	0.87	1.83	2.11	99.85	11.88	19.48	226.77	36.120	7.045
6/30/2003	0.86	1.89	2.20	103.85	11.91	19.54	229.89	36.940	7.123
7/31/2003	0.74	2.05	2.75	99.49	11.93	19.60	232.97	35.009	7.199
8/31/2003	0.75	1.99	2.67	104.88	11.96	19.66	236.22	37.595	7.280
9/30/2003	0.75	2.10	2.81	104.33	11.98	19.73	239.35	36.005	7.356
10/31/2003	0.77	2.13	2.75	106.63	12.00	19.79	242.66	36.040	7.437
11/30/2003	0.78	2.12	2.72	107.59	12.03	19.86	245.88	36.388	7.516

Date	Oil Rate (CD) m3/d	Water Rate (CD) m3/d	Water Oil Ratio m3/m3	Water Inj Rate (CD) m3/d	Cum Oil Prod Km3	Cum Water Prod Km3	Cum Water Inj Km3	Voidage Replacement Ratio	Cum Voidage Replacemt Ratio
12/31/2003	0.75	2.36	3.13	110.75	12.05	19.93	249.32	35.055	7.598
1/31/2004	0.75	2.21	2.95	108.29	12.07	20.00	252.68	35.927	7.678
2/29/2004	0.75	2.06	2.76	107.93	12.09	20.06	255.81	37.754	7.754
3/31/2004	0.75	2.26	3.00	109.84	12.12	20.13	259.21	35.834	7.834
4/30/2004	0.74	2.58	3.49	114.53	12.14	20.21	262.65	34.016	7.914
5/31/2004	0.74	2.80	3.80	115.53	12.16	20.29	266.23	32.232	7.995
6/30/2004	0.80	2.67	3.32	110.66	12.19	20.37	269.55	31.401	8.069
7/31/2004	0.83	2.18	2.64	115.54	12.21	20.44	273.13	37.702	8.153
8/31/2004	0.83	2.19	2.66	109.27	12.24	20.51	276.52	35.507	8.231
9/30/2004	0.81	2.13	2.62	109.18	12.26	20.57	279.79	36.428	8.306
10/31/2004	0.82	2.15	2.64	111.72	12.29	20.64	283.26	36.932	8.386
11/30/2004	0.79	2.15	2.72	112.21	12.31	20.70	286.62	37.371	8.463
12/31/2004	0.81	2.18	2.68	114.65	12.34	20.77	290.18	37.589	8.544
1/31/2005	0.84	2.19	2.61	113.28	12.36	20.84	293.69	36.720	8.623
2/28/2005	0.84	2.25	2.69	102.74	12.39	20.90	296.56	32.673	8.685
3/31/2005	0.84	2.30	2.75	102.74	12.41	20.97	299.75	32.154	8.753
4/30/2005	0.73	1.98	2.69	99.13	12.43	21.03	302.72	35.914	8.818
5/31/2005	0.62	1.48	2.40	100.05	12.45	21.08	305.82	46.745	8.892
6/30/2005	0.64	1.52	2.37	102.33	12.47	21.12	308.89	46.241	8.964
7/31/2005	0.64	1.42	2.20	104.97	12.49	21.17	312.15	49.901	9.041
8/31/2005	0.68	1.62	2.36	105.14	12.51	21.22	315.41	44.772	9.116
9/30/2005	0.70	1.68	2.38	100.22	12.53	21.27	318.41	41.262	9.184
10/31/2005	0.69	1.52	2.22	98.17	12.56	21.32	321.46	43.537	9.253
11/30/2005	0.71	1.56	2.20	103.34	12.58	21.36	324.56	44.623	9.323
12/31/2005	0.71	1.57	2.22	103.48	12.60	21.41	327.77	44.401	9.396
1/31/2006	0.72	1.55	2.15	100.75	12.62	21.46	330.89	43.406	9.466
2/28/2006	0.69	1.51	2.18	103.78	12.64	21.50	333.79	46.148	9.532
3/31/2006	0.73	2.04	2.78	101.23	12.66	21.56	336.93	35.791	9.598
4/30/2006	0.72	1.56	2.17	85.67	12.68	21.61	339.50	36.784	9.652
5/31/2006	0.70	1.56	2.21	83.71	12.71	21.66	342.10	36.173	9.706
6/30/2006	0.78	1.35	1.72	84.27	12.73	21.70	344.63	38.609	9.759
7/31/2006	0.81	1.44	1.79	90.53	12.76	21.74	347.43	39.232	9.819
8/31/2006	0.80	1.39	1.73	100.62	12.78	21.79	350.55	44.749	9.887
9/30/2006	0.81	1.55	1.90	101.42	12.80	21.83	353.59	41.986	9.953
10/31/2006	0.73	1.29	1.77	26.68	12.83	21.87	354.42	12.862	9.958
11/30/2006	0.75	1.33	1.78	27.97	12.85	21.91	355.26	13.134	9.964
12/31/2006	0.80	1.51	1.88	28.00	12.87	21.96	356.13	11.833	9.968
1/31/2007	0.77	1.96	2.55		12.90	22.02	356.13	0.000	9.944
2/28/2007	0.79	1.55	1.97		12.92	22.06	356.13	0.000	9.925
3/31/2007	0.82	1.63	1.98	27.58	12.95	22.12	356.98	10.962	9.927
4/30/2007	0.81	1.56	1.91	26.90	12.97	22.16	357.79	11.090	9.930
5/31/2007	0.81	1.74	2.14	26.87	13.00	22.22	358.62	10.307	9.931
6/30/2007	0.80	1.53	1.91	27.20	13.02	22.26	359.44	11.370	9.933
7/31/2007	0.75	1.53	2.05	25.26	13.04	22.31	360.22	10.836	9.935
8/31/2007	0.77	1.38	1.79	24.84	13.07	22.35	360.99	11.235	9.938
9/30/2007	0.75	1.36	1.81	25.23	13.09	22.39	361.75	11.704	9.941
10/31/2007	0.76	1.26	1.66	48.32	13.11	22.43	363.25	23.340	9.964
11/30/2007	0.77	1.45	1.89	50.60	13.14	22.48	364.77	22.308	9.987

Date	Oil Rate (CD) m3/d	Water Rate (CD) m3/d	Water Oil Ratio m3/m3	Water Inj Rate (CD) m3/d	Cum Oil Prod Km3	Cum Water Prod Km3	Cum Water Inj Km3	Voidage Replacement Ratio	Cum Voidage Replacemt Ratio
12/31/2007	0.79	1.62	2.05		13.16	22.53	364.77	0.000	9.967
1/31/2008	0.79	1.60	2.03	25.87	13.18	22.58	365.57	10.598	9.968
2/29/2008	0.74	1.46	1.97		13.21	22.62	365.57	0.000	9.950
3/31/2008	0.75	1.63	2.19	26.29	13.23	22.67	366.38	10.808	9.952
4/30/2008	0.75	1.64	2.17	25.83	13.25	22.72	367.16	10.581	9.953
5/31/2008	0.74	1.61	2.18	25.84	13.27	22.77	367.96	10.767	9.955
6/30/2008	0.83	1.52	1.83	23.97	13.30	22.81	368.68	9.954	9.955
7/31/2008	0.78	1.34	1.71	24.29	13.32	22.85	369.43	11.163	9.957
8/31/2008	0.81	1.30	1.60	22.32	13.35	22.89	370.12	10.322	9.958
9/30/2008	0.78	0.90	1.15	2.28	13.37	22.92	370.19	1.311	9.946
10/31/2008	0.80	1.31	1.63	2.38	13.40	22.96	370.26	1.093	9.930
11/30/2008	0.89	1.62	1.83	26.94	13.42	23.01	371.07	10.495	9.931
12/31/2008	0.89	1.67	1.87	27.75	13.45	23.06	371.93	10.602	9.932
1/31/2009	0.88	1.66	1.88	27.08	13.48	23.11	372.77	10.395	9.933
2/28/2009	0.88	1.70	1.94	26.85	13.50	23.16	373.52	10.184	9.934
3/31/2009	0.85	1.82	2.14	27.27	13.53	23.22	374.37	9.987	9.934
4/30/2009	0.88	1.73	1.98	26.99	13.56	23.27	375.18	10.112	9.934
5/31/2009	0.87	1.69	1.95	26.33	13.58	23.32	376.00	10.027	9.934
6/30/2009	0.85	1.67	1.97	26.48	13.61	23.37	376.79	10.286	9.935
7/31/2009	0.86	1.73	2.01	27.59	13.63	23.43	377.65	10.428	9.936
8/31/2009	0.88	1.77	2.02	22.22	13.66	23.48	378.33	8.191	9.932
9/30/2009	0.93	1.79	1.92	25.09	13.69	23.53	379.09	9.010	9.930
10/31/2009	0.90	1.83	2.04	25.87	13.72	23.59	379.89	9.292	9.929
11/30/2009	0.88	1.78	2.03	24.41	13.74	23.64	380.62	8.983	9.927
12/31/2009	0.90	1.75	1.95	25.45	13.77	23.70	381.41	9.396	9.926
1/31/2010	0.92	1.72	1.87	25.61	13.80	23.75	382.20	9.482	9.925
2/28/2010	0.91	1.61	1.78	26.00	13.83	23.80	382.93	10.075	9.925
3/31/2010	0.90	1.64	1.82	25.19	13.85	23.85	383.71	9.672	9.924
4/30/2010	0.91	1.78	1.96	25.16	13.88	23.90	384.47	9.161	9.923
5/31/2010	0.89	1.83	2.06	24.79	13.91	23.96	385.24	8.926	9.921
6/30/2010	0.94	1.78	1.89	24.43	13.94	24.01	385.97	8.745	9.918
7/31/2010	0.97	1.76	1.82	23.79	13.97	24.07	386.71	8.521	9.915
8/31/2010	0.93	1.79	1.92	24.49	14.00	24.12	387.47	8.806	9.913
9/30/2010	0.90	1.83	2.02	24.77	14.02	24.18	388.21	8.878	9.910
10/31/2010	0.91	2.10	2.31	25.32	14.05	24.24	388.99	8.233	9.906
11/30/2010	0.88	2.04	2.32	24.76	14.08	24.30	389.74	8.304	9.903
12/31/2010	0.90	1.94	2.17	25.25	14.11	24.36	390.52	8.711	9.900
1/31/2011	0.84	1.97	2.35	24.88	14.13	24.42	391.29	8.702	9.897
2/28/2011	0.79	1.91	2.42	26.02	14.15	24.48	392.02	9.432	9.896
3/31/2011	0.77	1.90	2.46	25.83	14.18	24.54	392.82	9.470	9.895
4/30/2011	0.77	1.87	2.44	25.13	14.20	24.59	393.57	9.341	9.894
5/31/2011	0.76	1.89	2.49	23.62	14.22	24.65	394.31	8.727	9.892
6/30/2011	0.64	1.75	2.75	19.93	14.24	24.70	394.90	8.175	9.889
7/31/2011	0.53	1.68	3.20	19.01	14.26	24.76	395.49	8.460	9.886
8/31/2011	0.51	1.63	3.17	20.17	14.28	24.81	396.12	9.240	9.885
9/30/2011	0.67	1.89	2.83	14.14	14.30	24.86	396.54	5.423	9.876
10/31/2011	0.71	1.91	2.69	23.20	14.32	24.92	397.26	8.682	9.874
11/30/2011	0.82	2.01	2.45	23.51	14.34	24.98	397.97	8.153	9.870

Date	Oil Rate (CD) m3/d	Water Rate (CD) m3/d	Water Oil Ratio m3/m3	Water Inj Rate (CD) m3/d	Cum Oil Prod Km3	Cum Water Prod Km3	Cum Water Inj Km3	Voidage Replacement Ratio	Cum Voidage Replacemt Ratio
12/31/2011	0.82	2.00	2.43	22.75	14.37	25.05	398.67	7.904	9.866
1/31/2012	0.79	2.02	2.54	21.79	14.39	25.11	399.35	7.607	9.861
2/29/2012	0.80	2.02	2.52	21.60	14.42	25.17	399.98	7.488	9.856
3/31/2012	0.80	2.18	2.71	26.92	14.44	25.23	400.81	8.865	9.854
4/30/2012	0.79	2.01	2.55	25.11	14.46	25.29	401.56	8.801	9.852
5/31/2012	0.78	1.98	2.54	23.47	14.49	25.36	402.29	8.345	9.848
6/30/2012	0.79	1.97	2.50	23.05	14.51	25.41	402.98	8.208	9.845
7/31/2012	0.75	1.89	2.51	20.29	14.53	25.47	403.61	7.513	9.840
8/31/2012	0.80	1.79	2.24	19.94	14.56	25.53	404.23	7.553	9.836
9/30/2012	0.84	1.90	2.27	17.57	14.58	25.59	404.76	6.284	9.828
10/31/2012	0.85	1.81	2.14	17.29	14.61	25.64	405.29	6.354	9.821
11/30/2012	0.83	1.77	2.13	18.63	14.64	25.70	405.85	6.998	9.816
12/31/2012	0.79	1.63	2.05	20.26	14.66	25.75	406.48	8.184	9.813

Oil Formation Vol Factor : 1.07100 m3/m3

Water Formation Vol Factor : 1.00150 m3/m3

Water / Oil Ratio : 1.00 m3/m3

Pattern: 02/14-35-009-28Inj Set: DalyUnit#4

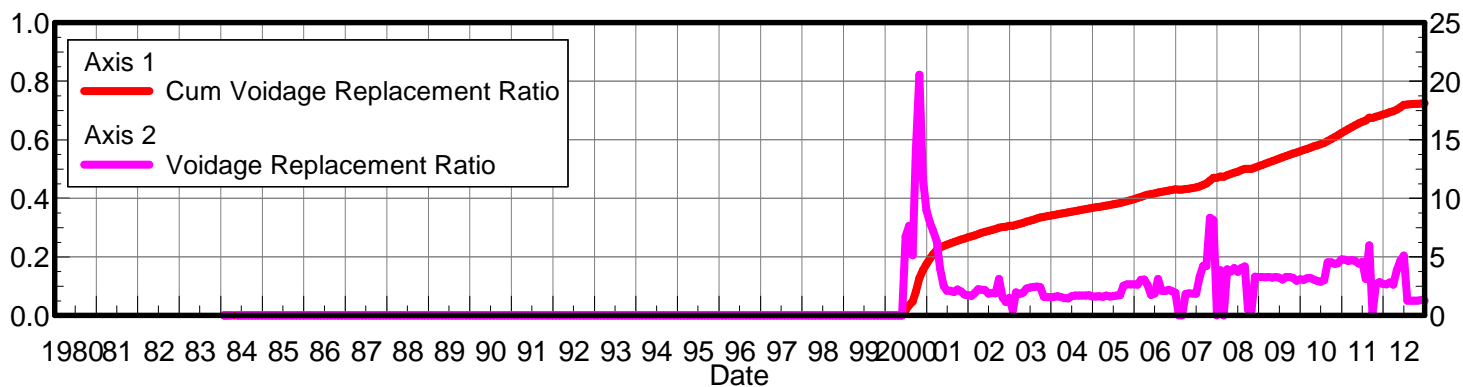
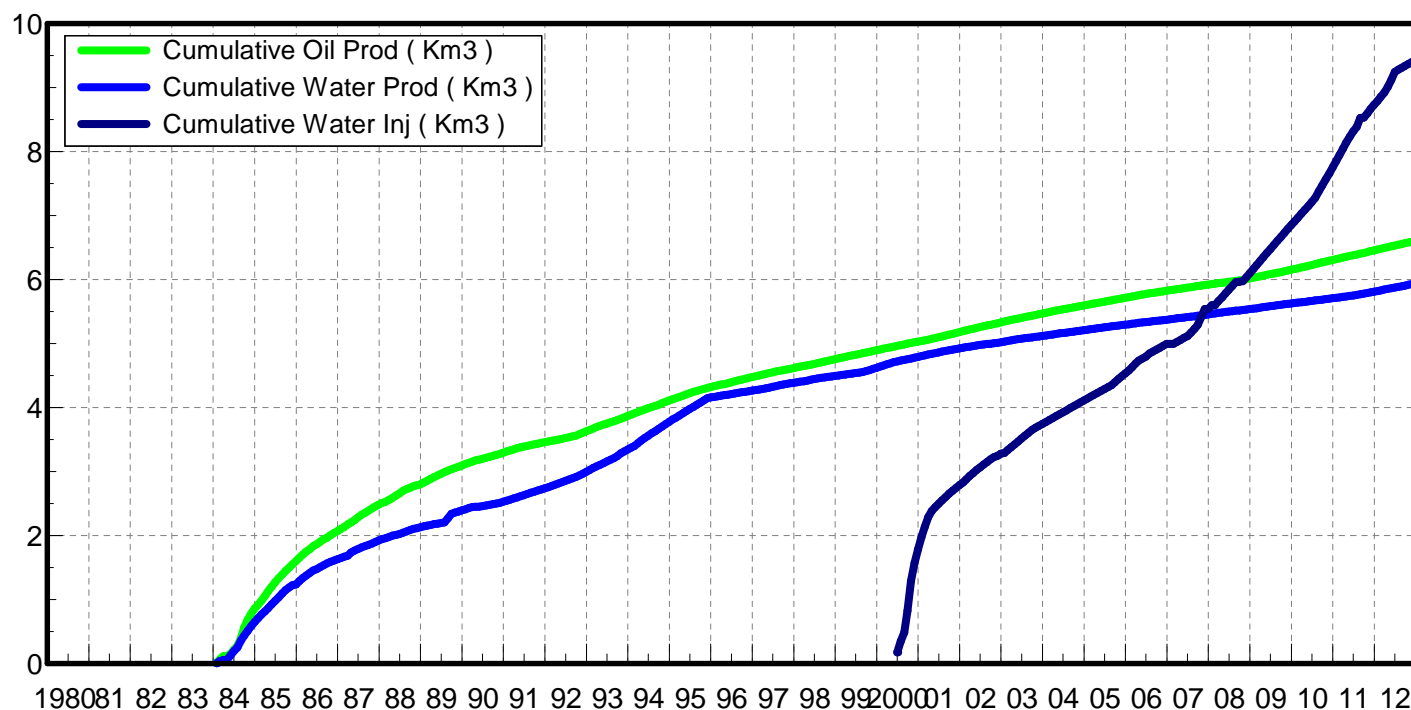
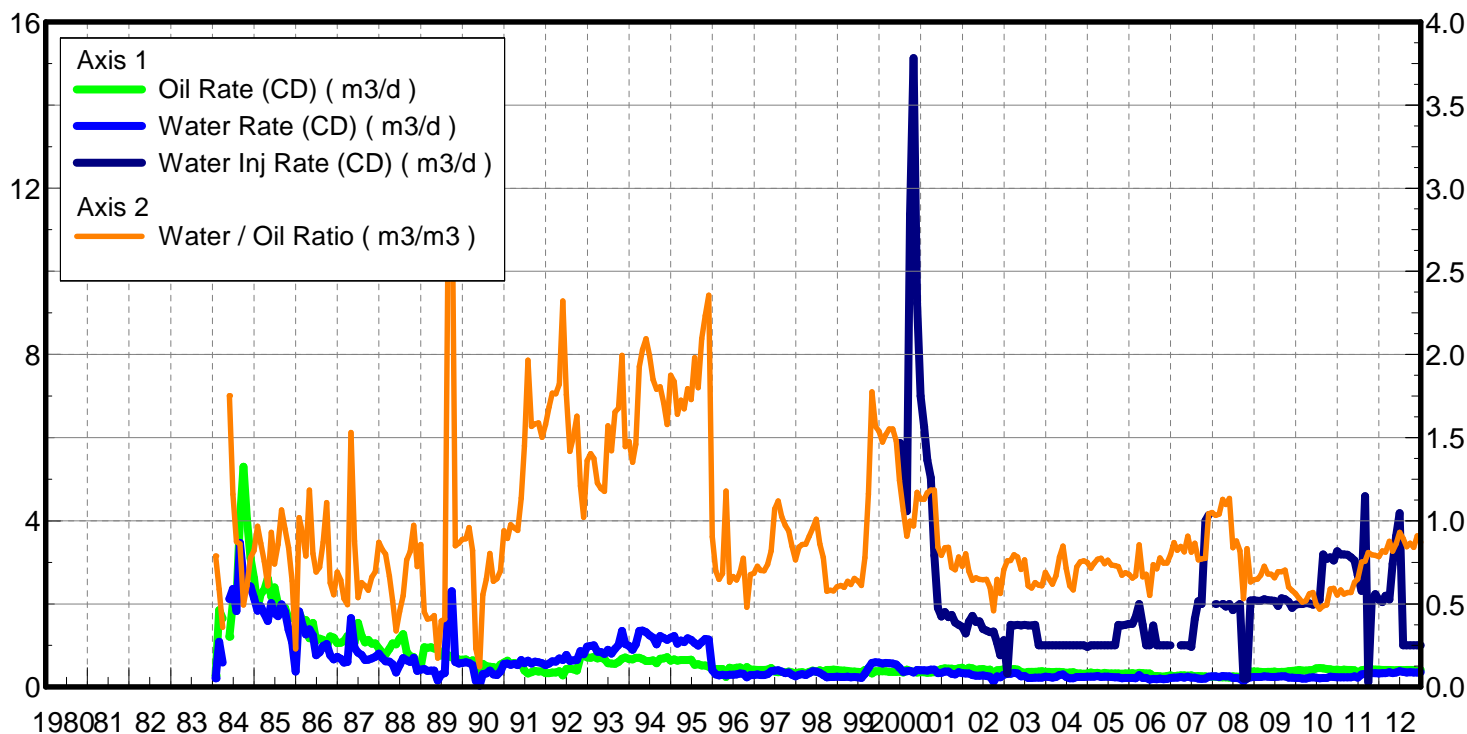
May 23, 2013

Operator: Zargon_O&G_Ltd

Oil Rate (CD) : 0.41 m3/d

Water Rate (CD) : 0.41 m3/d

Water Inj Rate (CD) : 0.97 m3/d



Date	Oil Rate (CD) m3/d	Water Rate (CD) m3/d	Water Oil Ratio m3/m3	Water Inj Rate (CD) m3/d	Cum Oil Prod Km3	Cum Water Prod Km3	Cum Water Inj Km3	Voidage Replacement Ratio	Cum Voidage Replacemt Ratio
1/31/1984	0.27	0.21	0.79		0.01	0.01	0.00	0.000	0.000
2/29/1984	1.85	1.09	0.59		0.06	0.04	0.00	0.000	0.000
3/31/1984	1.65	0.59	0.36		0.11	0.06	0.00	0.000	0.000
5/31/1984	1.21	2.12	1.75		0.15	0.12	0.00	0.000	0.000
6/30/1984	2.04	2.36	1.16		0.21	0.19	0.00	0.000	0.000
7/31/1984	2.09	1.83	0.88		0.28	0.25	0.00	0.000	0.000
8/31/1984	4.03	3.47	0.86		0.40	0.36	0.00	0.000	0.000
9/30/1984	5.30	2.62	0.49		0.56	0.44	0.00	0.000	0.000
10/31/1984	4.03	2.45	0.61		0.69	0.51	0.00	0.000	0.000
11/30/1984	3.11	2.42	0.78		0.78	0.58	0.00	0.000	0.000
12/31/1984	2.61	2.14	0.82		0.86	0.65	0.00	0.000	0.000
1/31/1985	1.90	1.83	0.97		0.92	0.71	0.00	0.000	0.000
2/28/1985	2.24	1.94	0.87		0.98	0.76	0.00	0.000	0.000
3/31/1985	2.34	1.76	0.75		1.05	0.82	0.00	0.000	0.000
4/30/1985	2.61	1.59	0.61		1.13	0.86	0.00	0.000	0.000
5/31/1985	2.17	2.02	0.93		1.20	0.93	0.00	0.000	0.000
6/30/1985	2.40	1.77	0.74		1.27	0.98	0.00	0.000	0.000
7/31/1985	1.99	1.70	0.86		1.33	1.03	0.00	0.000	0.000
8/31/1985	1.87	1.99	1.06		1.39	1.09	0.00	0.000	0.000
9/30/1985	1.90	1.81	0.95		1.45	1.15	0.00	0.000	0.000
10/31/1985	1.65	1.38	0.84		1.50	1.19	0.00	0.000	0.000
11/30/1985	1.69	1.08	0.64		1.55	1.22	0.00	0.000	0.000
12/31/1985	1.61	0.37	0.23		1.60	1.24	0.00	0.000	0.000
1/31/1986	1.79	1.82	1.02		1.65	1.29	0.00	0.000	0.000
2/28/1986	1.61	1.50	0.93		1.70	1.33	0.00	0.000	0.000
3/31/1986	1.61	1.27	0.79		1.75	1.37	0.00	0.000	0.000
4/30/1986	1.17	1.39	1.18		1.78	1.41	0.00	0.000	0.000
5/31/1986	1.54	1.24	0.80		1.83	1.45	0.00	0.000	0.000
6/30/1986	1.11	0.77	0.69		1.87	1.48	0.00	0.000	0.000
7/31/1986	1.16	0.84	0.72		1.90	1.50	0.00	0.000	0.000
8/31/1986	1.13	0.99	0.87		1.94	1.53	0.00	0.000	0.000
9/30/1986	0.94	1.04	1.11		1.97	1.56	0.00	0.000	0.000
10/31/1986	1.22	0.76	0.63		2.00	1.59	0.00	0.000	0.000
11/30/1986	1.19	0.66	0.56		2.04	1.61	0.00	0.000	0.000
12/31/1986	1.06	0.73	0.69		2.07	1.63	0.00	0.000	0.000
1/31/1987	1.06	0.68	0.64		2.10	1.65	0.00	0.000	0.000
2/28/1987	1.11	0.59	0.53		2.14	1.67	0.00	0.000	0.000
3/31/1987	1.23	0.61	0.50		2.17	1.69	0.00	0.000	0.000
4/30/1987	1.08	1.66	1.53		2.21	1.74	0.00	0.000	0.000
5/31/1987	1.07	0.94	0.88		2.24	1.77	0.00	0.000	0.000
6/30/1987	1.54	0.83	0.54		2.29	1.79	0.00	0.000	0.000
7/31/1987	1.24	0.78	0.63		2.32	1.81	0.00	0.000	0.000
8/31/1987	1.07	0.65	0.61		2.36	1.83	0.00	0.000	0.000
9/30/1987	1.13	0.66	0.58		2.39	1.85	0.00	0.000	0.000
10/31/1987	1.04	0.69	0.66		2.42	1.88	0.00	0.000	0.000
11/30/1987	1.05	0.73	0.69		2.45	1.90	0.00	0.000	0.000
12/31/1987	0.92	0.80	0.87		2.48	1.92	0.00	0.000	0.000
1/31/1988	0.84	0.69	0.83		2.51	1.94	0.00	0.000	0.000

Date	Oil Rate (CD) m3/d	Water Rate (CD) m3/d	Water Oil Ratio m3/m3	Water Inj Rate (CD) m3/d	Cum Oil Prod Km3	Cum Water Prod Km3	Cum Water Inj Km3	Voidage Replacement Ratio	Cum Voidage Replacemt Ratio
2/29/1988	0.78	0.62	0.80		2.53	1.96	0.00	0.000	0.000
3/31/1988	0.92	0.61	0.67		2.56	1.98	0.00	0.000	0.000
4/30/1988	1.05	0.55	0.52		2.59	2.00	0.00	0.000	0.000
5/31/1988	1.03	0.35	0.34		2.62	2.01	0.00	0.000	0.000
6/30/1988	1.16	0.53	0.46		2.66	2.02	0.00	0.000	0.000
7/31/1988	1.27	0.70	0.55		2.70	2.05	0.00	0.000	0.000
8/31/1988	0.84	0.64	0.76		2.72	2.07	0.00	0.000	0.000
9/30/1988	0.74	0.60	0.81		2.75	2.08	0.00	0.000	0.000
10/31/1988	0.72	0.70	0.97		2.77	2.11	0.00	0.000	0.000
11/30/1988	0.54	0.39	0.72		2.79	2.12	0.00	0.000	0.000
12/31/1988	0.49	0.42	0.86		2.80	2.13	0.00	0.000	0.000
1/31/1989	0.96	0.43	0.45		2.83	2.14	0.00	0.000	0.000
2/28/1989	0.94	0.38	0.41		2.86	2.15	0.00	0.000	0.000
3/31/1989	0.96	0.40	0.41		2.89	2.17	0.00	0.000	0.000
4/30/1989	0.93	0.40	0.43		2.91	2.18	0.00	0.000	0.000
5/31/1989	0.91	0.16	0.17		2.94	2.18	0.00	0.000	0.000
6/30/1989	0.76	0.30	0.40		2.96	2.19	0.00	0.000	0.000
7/31/1989	0.81	0.33	0.41		2.99	2.20	0.00	0.000	0.000
8/31/1989	0.76	2.17	2.85		3.01	2.27	0.00	0.000	0.000
9/30/1989	0.71	2.31	3.23		3.04	2.34	0.00	0.000	0.000
10/31/1989	0.71	0.60	0.85		3.06	2.36	0.00	0.000	0.000
11/30/1989	0.66	0.57	0.86		3.08	2.38	0.00	0.000	0.000
12/31/1989	0.66	0.58	0.89		3.10	2.39	0.00	0.000	0.000
1/31/1990	0.67	0.59	0.89		3.12	2.41	0.00	0.000	0.000
2/28/1990	0.60	0.58	0.96		3.13	2.43	0.00	0.000	0.000
3/31/1990	0.64	0.52	0.82		3.15	2.44	0.00	0.000	0.000
4/30/1990	0.63	0.15	0.23		3.17	2.45	0.00	0.000	0.000
5/31/1990	0.30	0.04	0.12		3.18	2.45	0.00	0.000	0.000
6/30/1990	0.56	0.31	0.55		3.20	2.46	0.00	0.000	0.000
7/31/1990	0.50	0.33	0.65		3.22	2.47	0.00	0.000	0.000
8/31/1990	0.49	0.39	0.80		3.23	2.48	0.00	0.000	0.000
9/30/1990	0.48	0.30	0.64		3.24	2.49	0.00	0.000	0.000
10/31/1990	0.44	0.29	0.65		3.26	2.50	0.00	0.000	0.000
11/30/1990	0.54	0.38	0.70		3.27	2.51	0.00	0.000	0.000
12/31/1990	0.59	0.56	0.94		3.29	2.53	0.00	0.000	0.000
1/31/1991	0.63	0.57	0.89		3.31	2.55	0.00	0.000	0.000
2/28/1991	0.55	0.54	0.98		3.33	2.56	0.00	0.000	0.000
3/31/1991	0.58	0.56	0.96		3.35	2.58	0.00	0.000	0.000
4/30/1991	0.56	0.53	0.94		3.36	2.59	0.00	0.000	0.000
5/31/1991	0.57	0.65	1.14		3.38	2.61	0.00	0.000	0.000
6/30/1991	0.40	0.57	1.45		3.39	2.63	0.00	0.000	0.000
7/31/1991	0.32	0.64	1.97		3.40	2.65	0.00	0.000	0.000
8/31/1991	0.36	0.56	1.57		3.41	2.67	0.00	0.000	0.000
9/30/1991	0.39	0.61	1.58		3.43	2.69	0.00	0.000	0.000
10/31/1991	0.38	0.60	1.59		3.44	2.70	0.00	0.000	0.000
11/30/1991	0.38	0.57	1.50		3.45	2.72	0.00	0.000	0.000
12/31/1991	0.34	0.53	1.58		3.46	2.74	0.00	0.000	0.000
1/31/1992	0.34	0.57	1.69		3.47	2.76	0.00	0.000	0.000

Date	Oil Rate (CD) m3/d	Water Rate (CD) m3/d	Water Oil Ratio m3/m3	Water Inj Rate (CD) m3/d	Cum Oil Prod Km3	Cum Water Prod Km3	Cum Water Inj Km3	Voidage Replacement Ratio	Cum Voidage Replacemt Ratio
2/29/1992	0.35	0.62	1.77		3.48	2.77	0.00	0.000	0.000
3/31/1992	0.35	0.61	1.76		3.49	2.79	0.00	0.000	0.000
4/30/1992	0.38	0.69	1.82		3.50	2.81	0.00	0.000	0.000
5/31/1992	0.28	0.65	2.32		3.51	2.83	0.00	0.000	0.000
6/30/1992	0.44	0.77	1.76		3.52	2.86	0.00	0.000	0.000
7/31/1992	0.44	0.62	1.42		3.54	2.88	0.00	0.000	0.000
8/31/1992	0.43	0.64	1.50		3.55	2.90	0.00	0.000	0.000
9/30/1992	0.40	0.65	1.63		3.56	2.92	0.00	0.000	0.000
10/31/1992	0.72	0.87	1.21		3.58	2.94	0.00	0.000	0.000
11/30/1992	0.77	0.79	1.02		3.61	2.97	0.00	0.000	0.000
12/31/1992	0.71	0.97	1.36		3.63	3.00	0.00	0.000	0.000
1/31/1993	0.70	0.99	1.40		3.65	3.03	0.00	0.000	0.000
2/28/1993	0.73	1.00	1.38		3.67	3.05	0.00	0.000	0.000
3/31/1993	0.69	0.85	1.23		3.69	3.08	0.00	0.000	0.000
4/30/1993	0.71	0.84	1.19		3.71	3.11	0.00	0.000	0.000
5/31/1993	0.68	0.79	1.18		3.74	3.13	0.00	0.000	0.000
6/30/1993	0.57	0.90	1.57		3.75	3.16	0.00	0.000	0.000
7/31/1993	0.56	0.80	1.42		3.77	3.18	0.00	0.000	0.000
8/31/1993	0.55	0.92	1.65		3.79	3.21	0.00	0.000	0.000
9/30/1993	0.60	1.01	1.68		3.80	3.24	0.00	0.000	0.000
10/31/1993	0.68	1.35	1.99		3.83	3.28	0.00	0.000	0.000
11/30/1993	0.71	1.03	1.45		3.85	3.31	0.00	0.000	0.000
12/31/1993	0.67	0.99	1.48		3.87	3.34	0.00	0.000	0.000
1/31/1994	0.66	0.89	1.35		3.89	3.37	0.00	0.000	0.000
2/28/1994	0.70	1.03	1.46		3.91	3.40	0.00	0.000	0.000
3/31/1994	0.70	1.35	1.93		3.93	3.44	0.00	0.000	0.000
4/30/1994	0.67	1.36	2.03		3.95	3.48	0.00	0.000	0.000
5/31/1994	0.63	1.32	2.09		3.97	3.52	0.00	0.000	0.000
6/30/1994	0.62	1.24	1.99		3.99	3.56	0.00	0.000	0.000
7/31/1994	0.64	1.19	1.85		4.01	3.60	0.00	0.000	0.000
8/31/1994	0.57	1.02	1.79		4.03	3.63	0.00	0.000	0.000
9/30/1994	0.68	1.22	1.81		4.05	3.67	0.00	0.000	0.000
10/31/1994	0.69	1.18	1.71		4.07	3.70	0.00	0.000	0.000
11/30/1994	0.72	1.13	1.58		4.09	3.74	0.00	0.000	0.000
12/31/1994	0.63	1.19	1.88		4.11	3.77	0.00	0.000	0.000
1/31/1995	0.67	1.23	1.84		4.13	3.81	0.00	0.000	0.000
2/28/1995	0.63	1.04	1.64		4.15	3.84	0.00	0.000	0.000
3/31/1995	0.65	1.12	1.73		4.17	3.88	0.00	0.000	0.000
4/30/1995	0.65	1.08	1.67		4.19	3.91	0.00	0.000	0.000
5/31/1995	0.65	1.17	1.79		4.21	3.95	0.00	0.000	0.000
6/30/1995	0.65	1.13	1.73		4.23	3.98	0.00	0.000	0.000
7/31/1995	0.53	1.06	1.98		4.24	4.01	0.00	0.000	0.000
8/31/1995	0.55	0.99	1.80		4.26	4.04	0.00	0.000	0.000
9/30/1995	0.52	1.08	2.10		4.28	4.08	0.00	0.000	0.000
10/31/1995	0.52	1.16	2.23		4.29	4.11	0.00	0.000	0.000
11/30/1995	0.48	1.14	2.36		4.31	4.15	0.00	0.000	0.000
12/31/1995	0.44	0.40	0.90		4.32	4.16	0.00	0.000	0.000
1/31/1996	0.44	0.31	0.70		4.33	4.17	0.00	0.000	0.000

Date	Oil Rate (CD) m3/d	Water Rate (CD) m3/d	Water Oil Ratio m3/m3	Water Inj Rate (CD) m3/d	Cum Oil Prod Km3	Cum Water Prod Km3	Cum Water Inj Km3	Voidage Replacement Ratio	Cum Voidage Replacemt Ratio
2/29/1996	0.44	0.28	0.65		4.35	4.18	0.00	0.000	0.000
3/31/1996	0.43	0.30	0.68		4.36	4.18	0.00	0.000	0.000
4/30/1996	0.24	0.28	1.18		4.37	4.19	0.00	0.000	0.000
5/31/1996	0.47	0.30	0.63		4.38	4.20	0.00	0.000	0.000
6/30/1996	0.44	0.29	0.67		4.39	4.21	0.00	0.000	0.000
7/31/1996	0.47	0.30	0.64		4.41	4.22	0.00	0.000	0.000
8/31/1996	0.47	0.33	0.69		4.42	4.23	0.00	0.000	0.000
9/30/1996	0.41	0.32	0.78		4.44	4.24	0.00	0.000	0.000
10/31/1996	0.48	0.23	0.48		4.45	4.25	0.00	0.000	0.000
11/30/1996	0.42	0.28	0.68		4.46	4.26	0.00	0.000	0.000
12/31/1996	0.42	0.29	0.68		4.48	4.26	0.00	0.000	0.000
1/31/1997	0.41	0.30	0.73		4.49	4.27	0.00	0.000	0.000
2/28/1997	0.41	0.29	0.70		4.50	4.28	0.00	0.000	0.000
3/31/1997	0.41	0.28	0.70		4.51	4.29	0.00	0.000	0.000
4/30/1997	0.42	0.31	0.74		4.53	4.30	0.00	0.000	0.000
5/31/1997	0.46	0.38	0.82		4.54	4.31	0.00	0.000	0.000
6/30/1997	0.37	0.40	1.07		4.55	4.32	0.00	0.000	0.000
7/31/1997	0.36	0.40	1.12		4.56	4.34	0.00	0.000	0.000
8/31/1997	0.36	0.37	1.02		4.57	4.35	0.00	0.000	0.000
9/30/1997	0.35	0.34	0.97		4.58	4.36	0.00	0.000	0.000
10/31/1997	0.37	0.35	0.94		4.60	4.37	0.00	0.000	0.000
11/30/1997	0.35	0.29	0.85		4.61	4.38	0.00	0.000	0.000
12/31/1997	0.34	0.26	0.76		4.62	4.39	0.00	0.000	0.000
1/31/1998	0.35	0.30	0.84		4.63	4.39	0.00	0.000	0.000
2/28/1998	0.36	0.31	0.86		4.64	4.40	0.00	0.000	0.000
3/31/1998	0.34	0.29	0.86		4.65	4.41	0.00	0.000	0.000
4/30/1998	0.36	0.33	0.91		4.66	4.42	0.00	0.000	0.000
5/31/1998	0.40	0.38	0.96		4.67	4.43	0.00	0.000	0.000
6/30/1998	0.37	0.37	1.01		4.68	4.45	0.00	0.000	0.000
7/31/1998	0.40	0.35	0.86		4.70	4.46	0.00	0.000	0.000
8/31/1998	0.37	0.29	0.78		4.71	4.46	0.00	0.000	0.000
9/30/1998	0.41	0.24	0.58		4.72	4.47	0.00	0.000	0.000
10/31/1998	0.41	0.24	0.58		4.73	4.48	0.00	0.000	0.000
11/30/1998	0.42	0.24	0.58		4.74	4.49	0.00	0.000	0.000
12/31/1998	0.41	0.25	0.60		4.76	4.49	0.00	0.000	0.000
1/31/1999	0.40	0.24	0.61		4.77	4.50	0.00	0.000	0.000
2/28/1999	0.40	0.24	0.60		4.78	4.51	0.00	0.000	0.000
3/31/1999	0.39	0.25	0.64		4.79	4.52	0.00	0.000	0.000
4/30/1999	0.38	0.23	0.62		4.80	4.52	0.00	0.000	0.000
5/31/1999	0.38	0.25	0.65		4.82	4.53	0.00	0.000	0.000
6/30/1999	0.37	0.23	0.64		4.83	4.54	0.00	0.000	0.000
7/31/1999	0.36	0.22	0.61		4.84	4.54	0.00	0.000	0.000
8/31/1999	0.41	0.32	0.78		4.85	4.55	0.00	0.000	0.000
9/30/1999	0.39	0.46	1.16		4.86	4.57	0.00	0.000	0.000
10/31/1999	0.33	0.58	1.77		4.87	4.59	0.00	0.000	0.000
11/30/1999	0.38	0.60	1.57		4.88	4.60	0.00	0.000	0.000
12/31/1999	0.38	0.59	1.54		4.90	4.62	0.00	0.000	0.000
1/31/2000	0.38	0.57	1.47		4.91	4.64	0.00	0.000	0.000

Date	Oil Rate (CD) m3/d	Water Rate (CD) m3/d	Water Oil Ratio m3/m3	Water Inj Rate (CD) m3/d	Cum Oil Prod Km3	Cum Water Prod Km3	Cum Water Inj Km3	Voidage Replacement Ratio	Cum Voidage Replacemt Ratio
2/29/2000	0.38	0.58	1.52		4.92	4.66	0.00	0.000	0.000
3/31/2000	0.37	0.57	1.55		4.93	4.67	0.00	0.000	0.000
4/30/2000	0.36	0.56	1.55		4.94	4.69	0.00	0.000	0.000
5/31/2000	0.37	0.54	1.48		4.95	4.71	0.00	0.000	0.000
6/30/2000	0.38	0.47	1.24	5.87	4.96	4.72	0.18	6.768	0.018
7/31/2000	0.35	0.37	1.06	5.65	4.97	4.73	0.35	7.669	0.035
8/31/2000	0.42	0.38	0.91	4.23	4.99	4.74	0.48	5.138	0.048
9/30/2000	0.39	0.39	1.00	11.37	5.00	4.76	0.82	14.068	0.081
10/31/2000	0.36	0.35	0.97	15.13	5.01	4.77	1.29	20.546	0.128
11/30/2000	0.35	0.41	1.17	9.23	5.02	4.78	1.57	11.696	0.155
12/31/2000	0.35	0.40	1.13	7.00	5.03	4.79	1.79	8.990	0.176
1/31/2001	0.36	0.41	1.13	6.26	5.04	4.80	1.98	7.919	0.194
2/28/2001	0.34	0.40	1.17	5.46	5.05	4.82	2.13	7.214	0.209
3/31/2001	0.35	0.42	1.18	5.03	5.06	4.83	2.29	6.366	0.223
4/30/2001	0.35	0.42	1.18	3.17	5.07	4.84	2.38	3.977	0.232
5/31/2001	0.39	0.33	0.84	1.90	5.09	4.85	2.44	2.530	0.237
6/30/2001	0.43	0.34	0.79	1.70	5.10	4.86	2.49	2.121	0.242
7/31/2001	0.45	0.38	0.84	1.81	5.11	4.87	2.55	2.116	0.247
8/31/2001	0.44	0.37	0.84	1.68	5.13	4.88	2.60	1.992	0.251
9/30/2001	0.44	0.32	0.72	1.73	5.14	4.89	2.65	2.212	0.255
10/31/2001	0.43	0.30	0.70	1.55	5.15	4.90	2.70	2.050	0.259
11/30/2001	0.45	0.35	0.78	1.50	5.17	4.91	2.75	1.794	0.263
12/31/2001	0.46	0.34	0.73	1.45	5.18	4.92	2.79	1.743	0.267
1/31/2002	0.41	0.33	0.80	1.29	5.19	4.93	2.83	1.675	0.270
2/28/2002	0.47	0.32	0.70	1.57	5.21	4.94	2.88	1.911	0.274
3/31/2002	0.45	0.29	0.64	1.71	5.22	4.95	2.93	2.238	0.278
4/30/2002	0.41	0.27	0.66	1.57	5.23	4.96	2.98	2.195	0.282
5/31/2002	0.42	0.28	0.65	1.58	5.25	4.97	3.02	2.169	0.286
6/30/2002	0.44	0.28	0.65	1.40	5.26	4.98	3.07	1.870	0.289
7/31/2002	0.41	0.26	0.65	1.35	5.27	4.99	3.11	1.933	0.293
8/31/2002	0.42	0.25	0.60	1.32	5.28	4.99	3.15	1.901	0.296
9/30/2002	0.28	0.13	0.46	1.33	5.29	5.00	3.19	3.123	0.299
10/31/2002	0.40	0.26	0.65	1.06	5.30	5.01	3.22	1.547	0.302
11/30/2002	0.41	0.23	0.56	0.77	5.32	5.01	3.25	1.144	0.303
12/31/2002	0.42	0.30	0.70	1.13	5.33	5.02	3.28	1.506	0.306
1/31/2003	0.42	0.32	0.76	0.32	5.34	5.03	3.29	0.423	0.306
2/28/2003	0.42	0.32	0.76	1.50	5.35	5.04	3.33	1.974	0.310
3/31/2003	0.43	0.34	0.80	1.48	5.37	5.05	3.38	1.838	0.313
4/30/2003	0.42	0.33	0.78	1.50	5.38	5.06	3.42	1.936	0.317
5/31/2003	0.36	0.26	0.71	1.48	5.39	5.07	3.47	2.296	0.320
6/30/2003	0.34	0.26	0.76	1.50	5.40	5.08	3.52	2.389	0.324
7/31/2003	0.36	0.22	0.61	1.48	5.41	5.08	3.56	2.436	0.328
8/31/2003	0.36	0.22	0.60	1.48	5.42	5.09	3.61	2.466	0.331
9/30/2003	0.36	0.23	0.63	1.50	5.44	5.10	3.65	2.421	0.335
10/31/2003	0.38	0.23	0.61	1.00	5.45	5.10	3.68	1.585	0.337
11/30/2003	0.38	0.23	0.61	1.00	5.46	5.11	3.71	1.578	0.339
12/31/2003	0.36	0.25	0.69	1.00	5.47	5.12	3.74	1.563	0.341
1/31/2004	0.37	0.24	0.65	1.00	5.48	5.13	3.77	1.587	0.344

Date	Oil Rate (CD) m3/d	Water Rate (CD) m3/d	Water Oil Ratio m3/m3	Water Inj Rate (CD) m3/d	Cum Oil Prod Km3	Cum Water Prod Km3	Cum Water Inj Km3	Voidage Replacement Ratio	Cum Voidage Replacemt Ratio
2/29/2004	0.36	0.22	0.62	1.00	5.49	5.13	3.80	1.648	0.346
3/31/2004	0.36	0.24	0.67	1.00	5.50	5.14	3.84	1.579	0.348
4/30/2004	0.36	0.28	0.78	1.00	5.51	5.15	3.87	1.487	0.350
5/31/2004	0.36	0.30	0.85	1.00	5.53	5.16	3.90	1.457	0.352
6/30/2004	0.34	0.24	0.71	1.00	5.54	5.17	3.93	1.643	0.354
7/31/2004	0.35	0.21	0.61	1.00	5.55	5.17	3.96	1.691	0.356
8/31/2004	0.36	0.21	0.58	1.00	5.56	5.18	3.99	1.697	0.359
9/30/2004	0.33	0.24	0.72	1.00	5.57	5.19	4.02	1.691	0.361
10/31/2004	0.32	0.24	0.75	1.00	5.58	5.19	4.05	1.702	0.363
11/30/2004	0.32	0.24	0.76	1.00	5.59	5.20	4.08	1.723	0.365
12/31/2004	0.33	0.25	0.75	0.97	5.60	5.21	4.11	1.621	0.367
1/31/2005	0.35	0.25	0.72	1.00	5.61	5.22	4.14	1.619	0.369
2/28/2005	0.33	0.25	0.74	1.00	5.62	5.22	4.17	1.652	0.371
3/31/2005	0.34	0.26	0.77	1.00	5.63	5.23	4.20	1.599	0.373
4/30/2005	0.32	0.25	0.77	1.00	5.64	5.24	4.23	1.713	0.375
5/31/2005	0.34	0.25	0.74	1.00	5.65	5.25	4.26	1.634	0.377
6/30/2005	0.33	0.25	0.76	1.00	5.66	5.25	4.29	1.654	0.380
7/31/2005	0.33	0.24	0.73	1.00	5.67	5.26	4.32	1.706	0.382
8/31/2005	0.32	0.24	0.73	1.00	5.68	5.27	4.35	1.718	0.384
9/30/2005	0.33	0.24	0.72	1.50	5.69	5.28	4.40	2.560	0.387
10/31/2005	0.32	0.21	0.67	1.48	5.70	5.28	4.44	2.669	0.391
11/30/2005	0.32	0.22	0.69	1.50	5.71	5.29	4.49	2.648	0.394
12/31/2005	0.33	0.22	0.68	1.52	5.72	5.30	4.54	2.651	0.397
1/31/2006	0.33	0.22	0.65	1.52	5.73	5.30	4.58	2.634	0.401
2/28/2006	0.32	0.21	0.67	1.68	5.74	5.31	4.63	3.028	0.405
3/31/2006	0.34	0.29	0.85	2.00	5.75	5.32	4.69	3.077	0.409
4/30/2006	0.33	0.22	0.66	1.50	5.76	5.32	4.74	2.618	0.413
5/31/2006	0.32	0.22	0.68	1.00	5.77	5.33	4.77	1.769	0.415
6/30/2006	0.33	0.18	0.55	1.00	5.78	5.34	4.80	1.871	0.417
7/31/2006	0.26	0.19	0.74	1.48	5.78	5.34	4.84	3.137	0.420
8/31/2006	0.26	0.19	0.71	1.00	5.79	5.35	4.87	2.124	0.422
9/30/2006	0.26	0.20	0.78	1.00	5.80	5.35	4.90	2.085	0.424
10/31/2006	0.25	0.19	0.75	1.00	5.81	5.36	4.93	2.196	0.426
11/30/2006	0.27	0.20	0.75	1.00	5.82	5.37	4.96	2.072	0.429
12/31/2006	0.28	0.22	0.80	1.00	5.83	5.37	5.00	1.938	0.431
1/31/2007	0.26	0.22	0.87		5.83	5.38	5.00	0.000	0.430
2/28/2007	0.27	0.22	0.82		5.84	5.39	5.00	0.000	0.430
3/31/2007	0.28	0.24	0.85	1.00	5.85	5.39	5.03	1.844	0.432
4/30/2007	0.28	0.23	0.81	1.00	5.86	5.40	5.06	1.892	0.434
5/31/2007	0.27	0.25	0.91	1.00	5.87	5.41	5.09	1.867	0.436
6/30/2007	0.28	0.22	0.81	0.97	5.87	5.41	5.12	1.859	0.437
7/31/2007	0.26	0.22	0.87	1.65	5.88	5.42	5.17	3.306	0.441
8/31/2007	0.26	0.20	0.77	2.06	5.89	5.43	5.23	4.254	0.446
9/30/2007	0.26	0.20	0.77	2.00	5.90	5.43	5.29	4.207	0.451
10/31/2007	0.26	0.20	0.77	4.00	5.91	5.44	5.42	8.330	0.461
11/30/2007	0.24	0.25	1.04	4.13	5.91	5.45	5.54	8.158	0.471
12/31/2007	0.25	0.26	1.05		5.92	5.46	5.54	0.000	0.470
1/31/2008	0.25	0.25	1.03	2.00	5.93	5.46	5.60	3.868	0.475

Date	Oil Rate (CD) m3/d	Water Rate (CD) m3/d	Water Oil Ratio m3/m3	Water Inj Rate (CD) m3/d	Cum Oil Prod Km3	Cum Water Prod Km3	Cum Water Inj Km3	Voidage Replacement Ratio	Cum Voidage Replacemt Ratio
2/29/2008	0.23	0.24	1.04		5.94	5.47	5.60	0.000	0.474
3/31/2008	0.23	0.26	1.13	2.00	5.94	5.48	5.66	3.931	0.479
4/30/2008	0.24	0.26	1.10	1.93	5.95	5.49	5.72	3.755	0.483
5/31/2008	0.22	0.25	1.13	2.00	5.96	5.49	5.78	4.064	0.487
6/30/2008	0.26	0.22	0.84	1.85	5.96	5.50	5.84	3.720	0.492
7/31/2008	0.25	0.22	0.88	1.94	5.97	5.51	5.90	4.039	0.496
8/31/2008	0.25	0.21	0.82	2.00	5.98	5.51	5.96	4.198	0.501
9/30/2008	0.25	0.13	0.53	0.20	5.99	5.52	5.97	0.508	0.501
10/31/2008	0.25	0.21	0.83	0.20	6.00	5.52	5.97	0.421	0.500
11/30/2008	0.37	0.23	0.63	2.08	6.01	5.53	6.04	3.302	0.505
12/31/2008	0.37	0.24	0.65	2.09	6.02	5.54	6.10	3.285	0.509
1/31/2009	0.37	0.24	0.65	2.08	6.03	5.55	6.17	3.274	0.514
2/28/2009	0.36	0.24	0.67	2.08	6.04	5.55	6.22	3.272	0.518
3/31/2009	0.36	0.26	0.73	2.11	6.05	5.56	6.29	3.287	0.523
4/30/2009	0.37	0.25	0.68	2.09	6.06	5.57	6.35	3.245	0.527
5/31/2009	0.36	0.25	0.68	2.08	6.07	5.58	6.42	3.300	0.532
6/30/2009	0.37	0.24	0.66	2.07	6.08	5.58	6.48	3.235	0.536
7/31/2009	0.36	0.25	0.69	1.95	6.10	5.59	6.54	3.074	0.540
8/31/2009	0.37	0.25	0.69	2.14	6.11	5.60	6.60	3.299	0.545
9/30/2009	0.36	0.26	0.70	2.11	6.12	5.61	6.67	3.283	0.549
10/31/2009	0.38	0.23	0.60	2.05	6.13	5.61	6.73	3.213	0.553
11/30/2009	0.39	0.23	0.58	1.90	6.14	5.62	6.79	2.973	0.557
12/31/2009	0.39	0.22	0.56	1.98	6.15	5.63	6.85	3.087	0.561
1/31/2010	0.41	0.22	0.53	1.99	6.17	5.63	6.91	3.051	0.565
2/28/2010	0.40	0.20	0.51	2.00	6.18	5.64	6.97	3.167	0.569
3/31/2010	0.40	0.21	0.52	2.02	6.19	5.65	7.03	3.198	0.573
4/30/2010	0.40	0.23	0.56	2.01	6.20	5.65	7.09	3.075	0.577
5/31/2010	0.41	0.23	0.57	1.98	6.21	5.66	7.15	2.951	0.581
6/30/2010	0.45	0.22	0.50	2.01	6.23	5.67	7.21	2.866	0.585
7/31/2010	0.45	0.21	0.47	2.10	6.24	5.67	7.28	3.003	0.589
8/31/2010	0.45	0.22	0.49	3.19	6.26	5.68	7.38	4.554	0.596
9/30/2010	0.44	0.22	0.49	3.08	6.27	5.69	7.47	4.533	0.603
10/31/2010	0.43	0.25	0.59	3.12	6.28	5.69	7.57	4.406	0.610
11/30/2010	0.41	0.24	0.59	3.05	6.29	5.70	7.66	4.457	0.616
12/31/2010	0.42	0.23	0.55	3.26	6.31	5.71	7.76	4.790	0.623
1/31/2011	0.41	0.24	0.58	3.19	6.32	5.72	7.86	4.760	0.630
2/28/2011	0.42	0.23	0.56	3.19	6.33	5.72	7.95	4.664	0.636
3/31/2011	0.41	0.23	0.57	3.18	6.34	5.73	8.05	4.726	0.643
4/30/2011	0.41	0.23	0.57	3.12	6.36	5.74	8.14	4.643	0.649
5/31/2011	0.40	0.25	0.63	3.04	6.37	5.75	8.23	4.423	0.656
6/30/2011	0.34	0.22	0.65	2.70	6.38	5.75	8.31	4.560	0.661
7/31/2011	0.41	0.30	0.75	2.31	6.39	5.76	8.39	3.131	0.666
8/31/2011	0.42	0.32	0.76	4.59	6.41	5.77	8.53	5.991	0.676
9/30/2011	0.42	0.34	0.81	0.12	6.42	5.78	8.53	0.152	0.675
10/31/2011	0.42	0.34	0.80	2.11	6.43	5.79	8.60	2.677	0.679
11/30/2011	0.42	0.33	0.79	2.24	6.44	5.80	8.66	2.855	0.683
12/31/2011	0.42	0.33	0.78	2.10	6.46	5.81	8.73	2.698	0.686
1/31/2012	0.41	0.33	0.82	2.04	6.47	5.82	8.79	2.657	0.690

Date	Oil Rate (CD) m3/d	Water Rate (CD) m3/d	Water Oil Ratio m3/m3	Water Inj Rate (CD) m3/d	Cum Oil Prod Km3	Cum Water Prod Km3	Cum Water Inj Km3	Voidage Replacement Ratio	Cum Voidage Replacemt Ratio
2/29/2012	0.41	0.34	0.81	2.19	6.48	5.83	8.86	2.819	0.694
3/31/2012	0.41	0.36	0.88	2.10	6.49	5.84	8.92	2.628	0.698
4/30/2012	0.41	0.33	0.82	2.96	6.51	5.85	9.01	3.853	0.703
5/31/2012	0.40	0.35	0.86	3.63	6.52	5.86	9.12	4.670	0.711
6/30/2012	0.41	0.38	0.93	4.18	6.53	5.88	9.25	5.118	0.719
7/31/2012	0.40	0.36	0.89	1.00	6.54	5.89	9.28	1.260	0.720
8/31/2012	0.41	0.35	0.84	1.00	6.56	5.90	9.31	1.261	0.721
9/30/2012	0.41	0.35	0.87	1.00	6.57	5.91	9.34	1.266	0.722
10/31/2012	0.41	0.35	0.84	1.00	6.58	5.92	9.37	1.266	0.723
11/30/2012	0.38	0.35	0.91	1.00	6.59	5.93	9.40	1.325	0.724
12/31/2012	0.41	0.36	0.87	1.00	6.61	5.94	9.43	1.259	0.725

Oil Formation Vol Factor : 1.07100 m3/m3

Water Formation Vol Factor : 1.00150 m3/m3

Water / Oil Ratio : 1.86 m3/m3

Pattern: 02/16-35-009-28Inj Set: Daly Unit#4

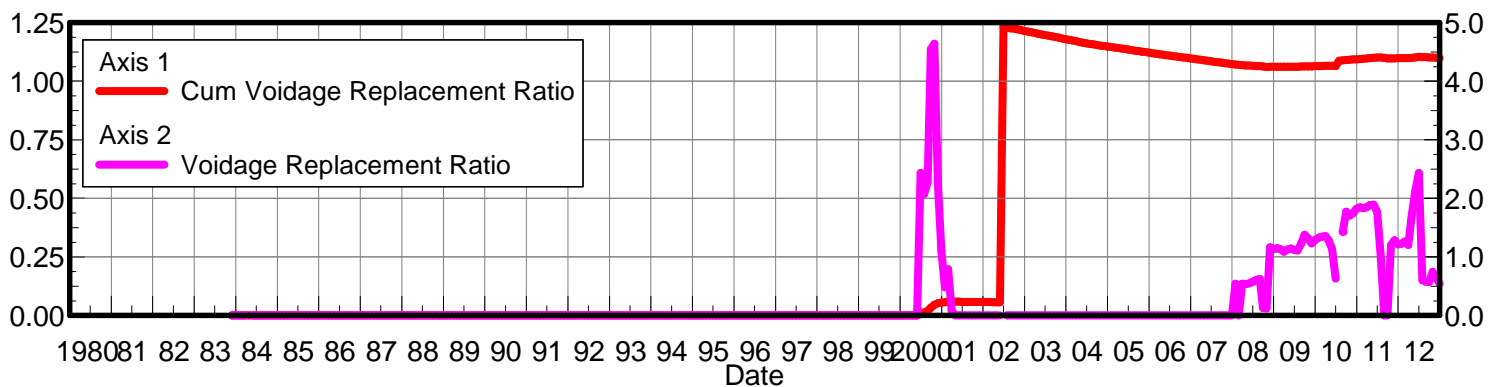
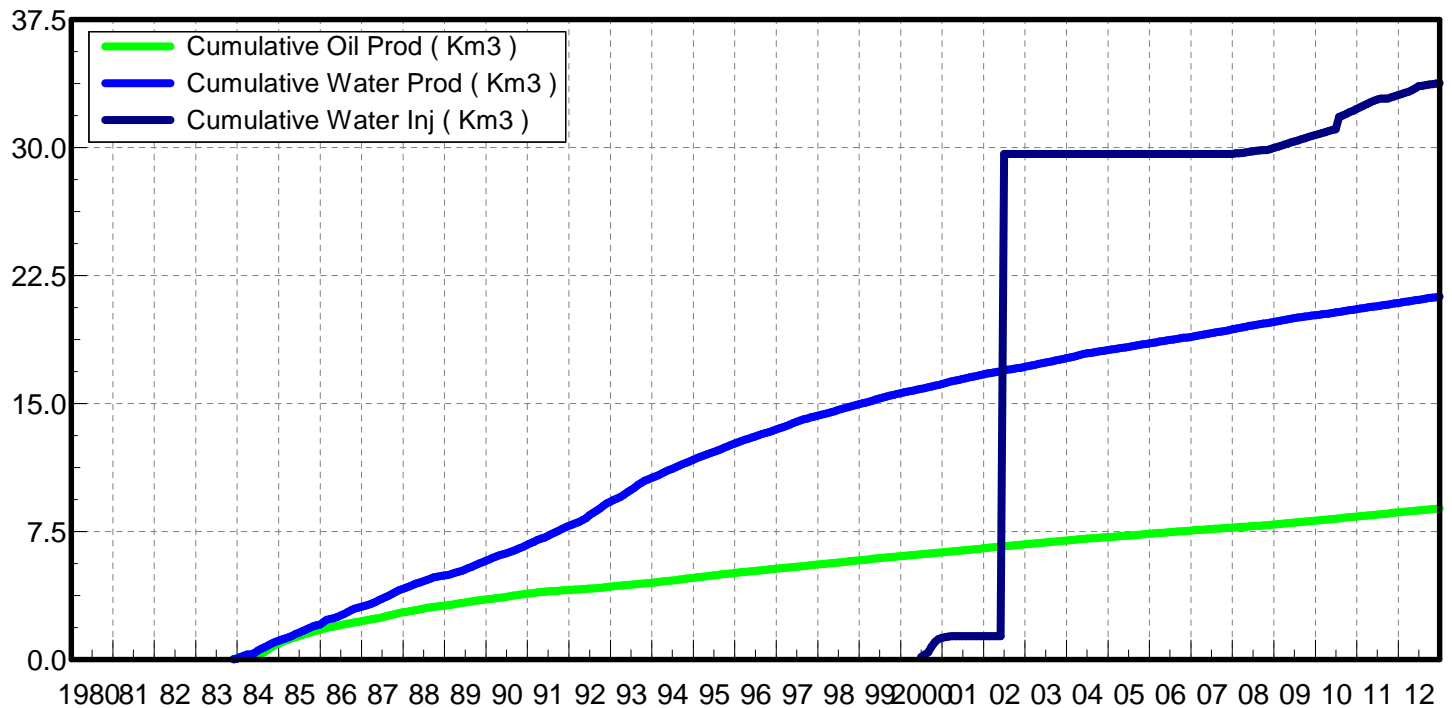
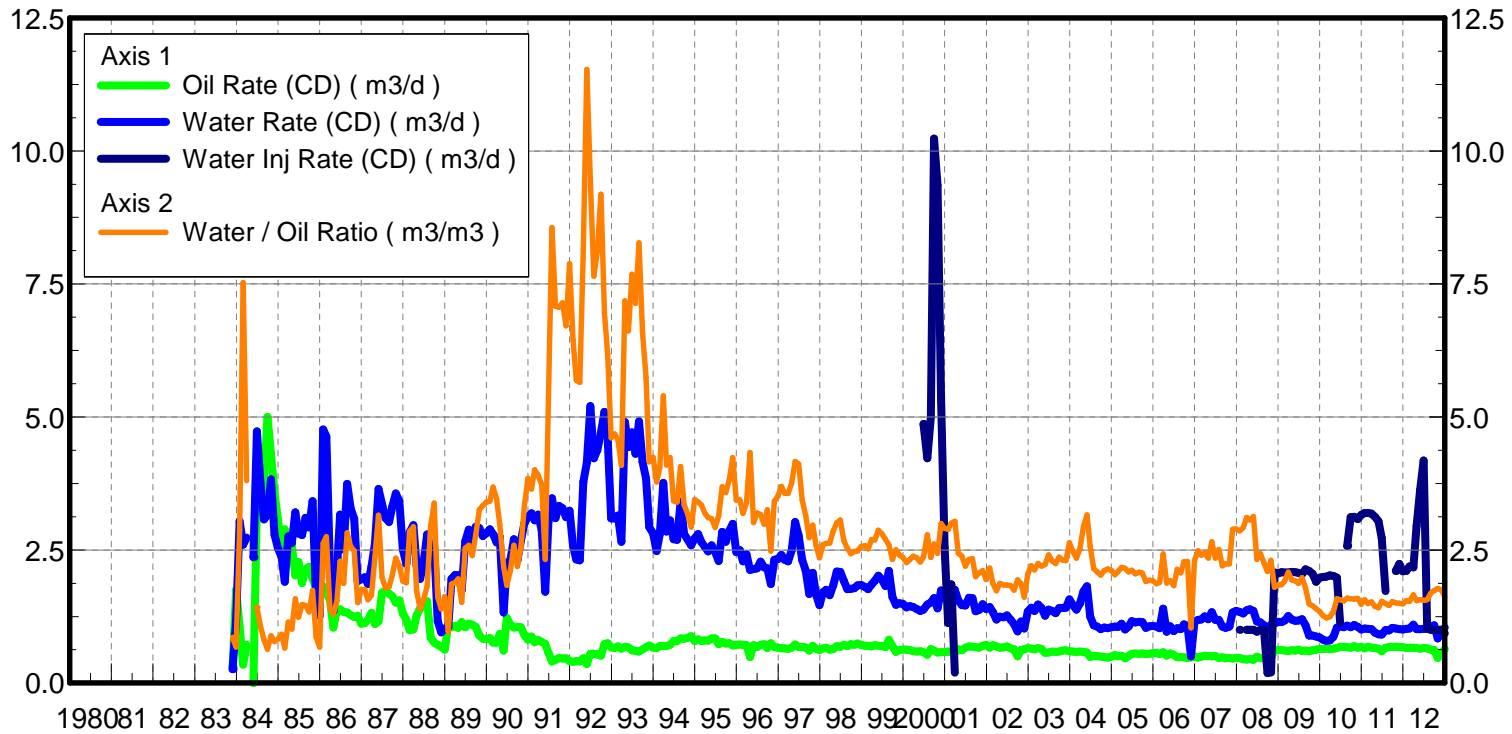
May 23, 2013

Operator: Zargon_O&G_Ltd

Oil Rate (CD) : 0.65 m3/d

Water Rate (CD) : 1.21 m3/d

Water Inj Rate (CD) : 0.97 m3/d



Date	Oil Rate (CD) m3/d	Water Rate (CD) m3/d	Water Oil Ratio m3/m3	Water Inj Rate (CD) m3/d	Cum Oil Prod Km3	Cum Water Prod Km3	Cum Water Inj Km3	Voidage Replacement Ratio	Cum Voidage Replacemt Ratio
11/30/1983	0.30	0.26	0.86		0.01	0.01	0.00	0.000	0.000
12/31/1983	1.75	1.19	0.68		0.06	0.04	0.00	0.000	0.000
1/31/1984	1.06	3.04	2.87		0.10	0.14	0.00	0.000	0.000
2/29/1984	0.35	2.60	7.53		0.11	0.21	0.00	0.000	0.000
3/31/1984	0.72	2.73	3.80		0.13	0.30	0.00	0.000	0.000
5/31/1984	0.00	2.36			0.13	0.37	0.00	0.000	0.000
6/30/1984	3.33	4.73	1.42		0.23	0.51	0.00	0.000	0.000
7/31/1984	3.50	3.76	1.07		0.34	0.63	0.00	0.000	0.000
8/31/1984	3.79	3.08	0.81		0.45	0.73	0.00	0.000	0.000
9/30/1984	5.00	3.16	0.63		0.60	0.82	0.00	0.000	0.000
10/31/1984	4.30	3.83	0.89		0.74	0.94	0.00	0.000	0.000
11/30/1984	3.58	2.79	0.78		0.84	1.02	0.00	0.000	0.000
12/31/1984	3.05	2.53	0.83		0.94	1.10	0.00	0.000	0.000
1/31/1985	2.59	2.37	0.92		1.02	1.17	0.00	0.000	0.000
2/28/1985	2.89	1.90	0.66		1.10	1.23	0.00	0.000	0.000
3/31/1985	2.40	2.76	1.15		1.18	1.31	0.00	0.000	0.000
4/30/1985	2.59	2.63	1.02		1.25	1.39	0.00	0.000	0.000
5/31/1985	2.02	3.21	1.59		1.32	1.49	0.00	0.000	0.000
6/30/1985	2.27	2.81	1.24		1.38	1.58	0.00	0.000	0.000
7/31/1985	1.88	2.78	1.48		1.44	1.66	0.00	0.000	0.000
8/31/1985	2.13	3.11	1.46		1.51	1.76	0.00	0.000	0.000
9/30/1985	2.19	2.92	1.34		1.57	1.85	0.00	0.000	0.000
10/31/1985	1.96	3.42	1.74		1.63	1.95	0.00	0.000	0.000
11/30/1985	1.80	1.55	0.86		1.69	2.00	0.00	0.000	0.000
12/31/1985	1.87	1.27	0.68		1.75	2.04	0.00	0.000	0.000
1/31/1986	1.81	4.77	2.63		1.80	2.19	0.00	0.000	0.000
2/28/1986	1.68	4.63	2.75		1.85	2.32	0.00	0.000	0.000
3/31/1986	1.57	2.21	1.41		1.90	2.38	0.00	0.000	0.000
4/30/1986	1.04	1.35	1.29		1.93	2.42	0.00	0.000	0.000
5/31/1986	1.38	2.12	1.54		1.97	2.49	0.00	0.000	0.000
6/30/1986	1.38	3.17	2.29		2.01	2.59	0.00	0.000	0.000
7/31/1986	1.34	2.51	1.87		2.06	2.66	0.00	0.000	0.000
8/31/1986	1.32	3.74	2.83		2.10	2.78	0.00	0.000	0.000
9/30/1986	1.28	3.28	2.57		2.14	2.88	0.00	0.000	0.000
10/31/1986	1.24	3.09	2.49		2.17	2.97	0.00	0.000	0.000
11/30/1986	1.27	1.91	1.51		2.21	3.03	0.00	0.000	0.000
12/31/1986	1.11	1.95	1.75		2.25	3.09	0.00	0.000	0.000
1/31/1987	1.13	1.99	1.76		2.28	3.15	0.00	0.000	0.000
2/28/1987	1.19	1.86	1.56		2.31	3.20	0.00	0.000	0.000
3/31/1987	1.32	2.18	1.65		2.36	3.27	0.00	0.000	0.000
4/30/1987	1.11	2.63	2.38		2.39	3.35	0.00	0.000	0.000
5/31/1987	1.16	3.65	3.15		2.42	3.46	0.00	0.000	0.000
6/30/1987	1.70	3.37	1.98		2.48	3.57	0.00	0.000	0.000
7/31/1987	1.73	3.10	1.79		2.53	3.66	0.00	0.000	0.000
8/31/1987	1.68	3.03	1.81		2.58	3.76	0.00	0.000	0.000
9/30/1987	1.63	3.31	2.03		2.63	3.85	0.00	0.000	0.000
10/31/1987	1.51	3.56	2.35		2.68	3.97	0.00	0.000	0.000
11/30/1987	1.55	3.42	2.20		2.72	4.07	0.00	0.000	0.000

Date	Oil Rate (CD) m3/d	Water Rate (CD) m3/d	Water Oil Ratio m3/m3	Water Inj Rate (CD) m3/d	Cum Oil Prod Km3	Cum Water Prod Km3	Cum Water Inj Km3	Voidage Replacement Ratio	Cum Voidage Replacemt Ratio
12/31/1987	1.31	2.51	1.92		2.76	4.15	0.00	0.000	0.000
1/31/1988	1.19	2.24	1.88		2.80	4.22	0.00	0.000	0.000
2/29/1988	0.99	2.83	2.84		2.83	4.30	0.00	0.000	0.000
3/31/1988	1.01	2.97	2.94		2.86	4.39	0.00	0.000	0.000
4/30/1988	1.27	2.21	1.73		2.90	4.46	0.00	0.000	0.000
5/31/1988	1.40	1.96	1.39		2.94	4.52	0.00	0.000	0.000
6/30/1988	1.44	2.27	1.57		2.99	4.58	0.00	0.000	0.000
7/31/1988	1.53	2.79	1.82		3.03	4.67	0.00	0.000	0.000
8/31/1988	0.85	2.51	2.95		3.06	4.75	0.00	0.000	0.000
9/30/1988	0.76	2.56	3.38		3.08	4.83	0.00	0.000	0.000
10/31/1988	0.72	1.17	1.62		3.11	4.86	0.00	0.000	0.000
11/30/1988	0.68	0.95	1.39		3.13	4.89	0.00	0.000	0.000
12/31/1988	0.63	1.02	1.63		3.15	4.92	0.00	0.000	0.000
1/31/1989	1.09	1.05	0.96		3.18	4.95	0.00	0.000	0.000
2/28/1989	1.05	1.96	1.86		3.21	5.01	0.00	0.000	0.000
3/31/1989	1.08	2.03	1.88		3.24	5.07	0.00	0.000	0.000
4/30/1989	1.04	2.03	1.96		3.27	5.13	0.00	0.000	0.000
5/31/1989	1.15	1.75	1.52		3.31	5.19	0.00	0.000	0.000
6/30/1989	1.05	2.66	2.54		3.34	5.27	0.00	0.000	0.000
7/31/1989	1.11	2.89	2.59		3.37	5.36	0.00	0.000	0.000
8/31/1989	1.10	2.64	2.40		3.41	5.44	0.00	0.000	0.000
9/30/1989	1.05	2.94	2.79		3.44	5.53	0.00	0.000	0.000
10/31/1989	0.90	2.91	3.25		3.47	5.62	0.00	0.000	0.000
11/30/1989	0.83	2.77	3.33		3.49	5.70	0.00	0.000	0.000
12/31/1989	0.83	2.82	3.40		3.52	5.79	0.00	0.000	0.000
1/31/1990	0.85	2.89	3.42		3.54	5.88	0.00	0.000	0.000
2/28/1990	0.76	2.80	3.69		3.57	5.95	0.00	0.000	0.000
3/31/1990	0.76	2.64	3.46		3.59	6.04	0.00	0.000	0.000
4/30/1990	0.92	2.74	2.97		3.62	6.12	0.00	0.000	0.000
5/31/1990	0.61	1.33	2.18		3.64	6.16	0.00	0.000	0.000
6/30/1990	1.22	2.25	1.84		3.67	6.23	0.00	0.000	0.000
7/31/1990	1.09	2.31	2.11		3.71	6.30	0.00	0.000	0.000
8/31/1990	1.05	2.70	2.59		3.74	6.38	0.00	0.000	0.000
9/30/1990	1.05	2.31	2.19		3.77	6.45	0.00	0.000	0.000
10/31/1990	1.05	2.68	2.55		3.80	6.53	0.00	0.000	0.000
11/30/1990	0.90	3.01	3.34		3.83	6.62	0.00	0.000	0.000
12/31/1990	0.81	3.12	3.85		3.86	6.72	0.00	0.000	0.000
1/31/1991	0.88	3.19	3.65		3.88	6.82	0.00	0.000	0.000
2/28/1991	0.76	3.06	4.00		3.90	6.91	0.00	0.000	0.000
3/31/1991	0.81	3.16	3.90		3.93	7.00	0.00	0.000	0.000
4/30/1991	0.77	2.87	3.72		3.95	7.09	0.00	0.000	0.000
5/31/1991	0.74	1.72	2.33		3.98	7.14	0.00	0.000	0.000
6/30/1991	0.57	3.03	5.34		3.99	7.23	0.00	0.000	0.000
7/31/1991	0.41	3.47	8.56		4.00	7.34	0.00	0.000	0.000
8/31/1991	0.44	3.10	7.08		4.02	7.44	0.00	0.000	0.000
9/30/1991	0.47	3.33	7.06		4.03	7.54	0.00	0.000	0.000
10/31/1991	0.46	3.29	7.15		4.05	7.64	0.00	0.000	0.000
11/30/1991	0.46	3.12	6.71		4.06	7.73	0.00	0.000	0.000

Date	Oil Rate (CD) m3/d	Water Rate (CD) m3/d	Water Oil Ratio m3/m3	Water Inj Rate (CD) m3/d	Cum Oil Prod Km3	Cum Water Prod Km3	Cum Water Inj Km3	Voidage Replacement Ratio	Cum Voidage Replacemt Ratio
12/31/1991	0.41	3.24	7.88		4.07	7.83	0.00	0.000	0.000
1/31/1992	0.40	2.57	6.44		4.09	7.91	0.00	0.000	0.000
2/29/1992	0.41	2.33	5.69		4.10	7.98	0.00	0.000	0.000
3/31/1992	0.41	2.31	5.65		4.11	8.05	0.00	0.000	0.000
4/30/1992	0.46	3.78	8.16		4.12	8.17	0.00	0.000	0.000
5/31/1992	0.36	4.14	11.53		4.14	8.29	0.00	0.000	0.000
6/30/1992	0.55	5.21	9.44		4.15	8.45	0.00	0.000	0.000
7/31/1992	0.55	4.22	7.65		4.17	8.58	0.00	0.000	0.000
8/31/1992	0.54	4.38	8.12		4.19	8.72	0.00	0.000	0.000
9/30/1992	0.51	4.71	9.19		4.20	8.86	0.00	0.000	0.000
10/31/1992	0.73	5.09	6.96		4.22	9.02	0.00	0.000	0.000
11/30/1992	0.75	4.61	6.18		4.25	9.15	0.00	0.000	0.000
12/31/1992	0.67	3.10	4.61		4.27	9.25	0.00	0.000	0.000
1/31/1993	0.66	3.09	4.68		4.29	9.35	0.00	0.000	0.000
2/28/1993	0.69	3.15	4.58		4.31	9.43	0.00	0.000	0.000
3/31/1993	0.65	2.65	4.09		4.33	9.52	0.00	0.000	0.000
4/30/1993	0.68	4.90	7.18		4.35	9.66	0.00	0.000	0.000
5/31/1993	0.67	4.43	6.62		4.37	9.80	0.00	0.000	0.000
6/30/1993	0.61	4.71	7.68		4.39	9.94	0.00	0.000	0.000
7/31/1993	0.60	4.31	7.13		4.40	10.08	0.00	0.000	0.000
8/31/1993	0.59	4.91	8.27		4.42	10.23	0.00	0.000	0.000
9/30/1993	0.63	4.16	6.59		4.44	10.35	0.00	0.000	0.000
10/31/1993	0.67	3.85	5.74		4.46	10.47	0.00	0.000	0.000
11/30/1993	0.70	2.93	4.16		4.48	10.56	0.00	0.000	0.000
12/31/1993	0.66	2.81	4.24		4.50	10.65	0.00	0.000	0.000
1/31/1994	0.66	2.48	3.78		4.53	10.72	0.00	0.000	0.000
2/28/1994	0.69	2.80	4.05		4.54	10.80	0.00	0.000	0.000
3/31/1994	0.70	3.76	5.40		4.57	10.92	0.00	0.000	0.000
4/30/1994	0.69	2.85	4.10		4.59	11.01	0.00	0.000	0.000
5/31/1994	0.72	3.06	4.24		4.61	11.10	0.00	0.000	0.000
6/30/1994	0.79	2.70	3.42		4.63	11.18	0.00	0.000	0.000
7/31/1994	0.79	2.69	3.40		4.66	11.26	0.00	0.000	0.000
8/31/1994	0.84	3.40	4.07		4.68	11.37	0.00	0.000	0.000
9/30/1994	0.83	2.80	3.35		4.71	11.45	0.00	0.000	0.000
10/31/1994	0.85	2.70	3.18		4.73	11.54	0.00	0.000	0.000
11/30/1994	0.88	2.59	2.93		4.76	11.61	0.00	0.000	0.000
12/31/1994	0.79	2.72	3.45		4.79	11.70	0.00	0.000	0.000
1/31/1995	0.82	2.80	3.40		4.81	11.79	0.00	0.000	0.000
2/28/1995	0.79	2.65	3.34		4.83	11.86	0.00	0.000	0.000
3/31/1995	0.80	2.56	3.19		4.86	11.94	0.00	0.000	0.000
4/30/1995	0.80	2.47	3.11		4.88	12.01	0.00	0.000	0.000
5/31/1995	0.84	2.59	3.09		4.91	12.09	0.00	0.000	0.000
6/30/1995	0.84	2.46	2.93		4.93	12.17	0.00	0.000	0.000
7/31/1995	0.73	2.29	3.14		4.96	12.24	0.00	0.000	0.000
8/31/1995	0.77	2.84	3.69		4.98	12.33	0.00	0.000	0.000
9/30/1995	0.74	2.66	3.58		5.00	12.41	0.00	0.000	0.000
10/31/1995	0.75	2.86	3.82		5.03	12.50	0.00	0.000	0.000
11/30/1995	0.71	2.99	4.23		5.05	12.59	0.00	0.000	0.000

Date	Oil Rate (CD) m3/d	Water Rate (CD) m3/d	Water Oil Ratio m3/m3	Water Inj Rate (CD) m3/d	Cum Oil Prod Km3	Cum Water Prod Km3	Cum Water Inj Km3	Voidage Replacement Ratio	Cum Voidage Replacemt Ratio
12/31/1995	0.72	2.46	3.43		5.07	12.66	0.00	0.000	0.000
1/31/1996	0.72	2.50	3.44		5.09	12.74	0.00	0.000	0.000
2/29/1996	0.72	2.29	3.19		5.11	12.81	0.00	0.000	0.000
3/31/1996	0.71	2.42	3.39		5.13	12.88	0.00	0.000	0.000
4/30/1996	0.49	2.12	4.33		5.15	12.94	0.00	0.000	0.000
5/31/1996	0.71	2.15	3.01		5.17	13.01	0.00	0.000	0.000
6/30/1996	0.67	2.15	3.20		5.19	13.07	0.00	0.000	0.000
7/31/1996	0.72	2.28	3.17		5.21	13.15	0.00	0.000	0.000
8/31/1996	0.73	2.17	2.99		5.24	13.21	0.00	0.000	0.000
9/30/1996	0.66	2.15	3.26		5.26	13.28	0.00	0.000	0.000
10/31/1996	0.75	1.86	2.48		5.28	13.34	0.00	0.000	0.000
11/30/1996	0.68	2.31	3.42		5.30	13.40	0.00	0.000	0.000
12/31/1996	0.66	2.33	3.51		5.32	13.48	0.00	0.000	0.000
1/31/1997	0.65	2.41	3.70		5.34	13.55	0.00	0.000	0.000
2/28/1997	0.65	2.32	3.57		5.36	13.62	0.00	0.000	0.000
3/31/1997	0.64	2.29	3.56		5.38	13.69	0.00	0.000	0.000
4/30/1997	0.66	2.49	3.76		5.40	13.76	0.00	0.000	0.000
5/31/1997	0.73	3.02	4.16		5.42	13.86	0.00	0.000	0.000
6/30/1997	0.67	2.77	4.12		5.44	13.94	0.00	0.000	0.000
7/31/1997	0.67	2.31	3.44		5.46	14.01	0.00	0.000	0.000
8/31/1997	0.67	2.12	3.15		5.48	14.08	0.00	0.000	0.000
9/30/1997	0.61	1.67	2.73		5.50	14.13	0.00	0.000	0.000
10/31/1997	0.70	2.07	2.97		5.52	14.19	0.00	0.000	0.000
11/30/1997	0.64	1.67	2.60		5.54	14.24	0.00	0.000	0.000
12/31/1997	0.62	1.47	2.35		5.56	14.29	0.00	0.000	0.000
1/31/1998	0.65	1.70	2.60		5.58	14.34	0.00	0.000	0.000
2/28/1998	0.67	1.75	2.63		5.60	14.39	0.00	0.000	0.000
3/31/1998	0.63	1.65	2.63		5.62	14.44	0.00	0.000	0.000
4/30/1998	0.64	1.84	2.86		5.64	14.49	0.00	0.000	0.000
5/31/1998	0.70	2.09	3.01		5.66	14.56	0.00	0.000	0.000
6/30/1998	0.68	2.09	3.06		5.68	14.62	0.00	0.000	0.000
7/31/1998	0.72	1.92	2.68		5.70	14.68	0.00	0.000	0.000
8/31/1998	0.70	1.76	2.53		5.72	14.74	0.00	0.000	0.000
9/30/1998	0.73	1.77	2.43		5.75	14.79	0.00	0.000	0.000
10/31/1998	0.72	1.78	2.47		5.77	14.84	0.00	0.000	0.000
11/30/1998	0.74	1.84	2.48		5.79	14.90	0.00	0.000	0.000
12/31/1998	0.72	1.85	2.57		5.81	14.96	0.00	0.000	0.000
1/31/1999	0.70	1.80	2.58		5.83	15.01	0.00	0.000	0.000
2/28/1999	0.70	1.77	2.52		5.85	15.06	0.00	0.000	0.000
3/31/1999	0.69	1.86	2.70		5.88	15.12	0.00	0.000	0.000
4/30/1999	0.71	1.92	2.69		5.90	15.18	0.00	0.000	0.000
5/31/1999	0.70	2.02	2.87		5.92	15.24	0.00	0.000	0.000
6/30/1999	0.69	1.94	2.81		5.94	15.30	0.00	0.000	0.000
7/31/1999	0.68	1.83	2.70		5.96	15.35	0.00	0.000	0.000
8/31/1999	0.81	2.11	2.59		5.99	15.42	0.00	0.000	0.000
9/30/1999	0.69	1.61	2.33		6.01	15.47	0.00	0.000	0.000
10/31/1999	0.59	1.47	2.51		6.02	15.51	0.00	0.000	0.000
11/30/1999	0.62	1.50	2.40		6.04	15.56	0.00	0.000	0.000

Date	Oil Rate (CD) m3/d	Water Rate (CD) m3/d	Water Oil Ratio m3/m3	Water Inj Rate (CD) m3/d	Cum Oil Prod Km3	Cum Water Prod Km3	Cum Water Inj Km3	Voidage Replacement Ratio	Cum Voidage Replacemt Ratio
12/31/1999	0.63	1.49	2.36		6.06	15.60	0.00	0.000	0.000
1/31/2000	0.63	1.42	2.27		6.08	15.65	0.00	0.000	0.000
2/29/2000	0.62	1.44	2.32		6.10	15.69	0.00	0.000	0.000
3/31/2000	0.60	1.43	2.38		6.12	15.74	0.00	0.000	0.000
4/30/2000	0.59	1.39	2.36		6.14	15.78	0.00	0.000	0.000
5/31/2000	0.60	1.35	2.27		6.16	15.82	0.00	0.000	0.000
6/30/2000	0.58	1.38	2.37	4.87	6.17	15.86	0.15	2.434	0.006
7/31/2000	0.53	1.47	2.79	4.23	6.19	15.91	0.28	2.072	0.012
8/31/2000	0.64	1.51	2.36	5.00	6.21	15.95	0.43	2.275	0.019
9/30/2000	0.61	1.60	2.62	10.23	6.23	16.00	0.74	4.547	0.033
10/31/2000	0.57	1.40	2.44	9.35	6.25	16.04	1.03	4.643	0.045
11/30/2000	0.58	1.74	3.00	5.33	6.26	16.10	1.19	2.258	0.052
12/31/2000	0.58	1.69	2.91	2.55	6.28	16.15	1.27	1.102	0.055
1/31/2001	0.59	1.70	2.89	1.13	6.30	16.20	1.30	0.484	0.057
2/28/2001	0.58	1.73	3.00	1.86	6.32	16.25	1.36	0.790	0.059
3/31/2001	0.58	1.75	3.04	0.19	6.33	16.30	1.36	0.082	0.059
4/30/2001	0.63	1.55	2.44		6.35	16.35	1.36	0.000	0.059
5/31/2001	0.61	1.46	2.38		6.37	16.40	1.36	0.000	0.059
6/30/2001	0.66	1.46	2.20		6.39	16.44	1.36	0.000	0.058
7/31/2001	0.69	1.60	2.33		6.41	16.49	1.36	0.000	0.058
8/31/2001	0.68	1.60	2.34		6.43	16.54	1.36	0.000	0.058
9/30/2001	0.68	1.35	2.00		6.45	16.58	1.36	0.000	0.058
10/31/2001	0.66	1.38	2.07		6.47	16.62	1.36	0.000	0.058
11/30/2001	0.70	1.48	2.11		6.50	16.67	1.36	0.000	0.058
12/31/2001	0.72	1.39	1.94		6.52	16.71	1.36	0.000	0.057
1/31/2002	0.66	1.43	2.16		6.54	16.75	1.36	0.000	0.057
2/28/2002	0.71	1.33	1.87		6.56	16.79	1.36	0.000	0.057
3/31/2002	0.69	1.19	1.74		6.58	16.83	1.36	0.000	0.057
4/30/2002	0.66	1.25	1.87		6.60	16.87	1.36	0.000	0.057
5/31/2002	0.67	1.23	1.84		6.62	16.90	1.36	0.000	0.057
6/30/2002	0.69	1.27	1.84	942.27	6.64	16.94	29.63	469.300	1.232
7/31/2002	0.65	1.19	1.83		6.66	16.98	29.63	0.000	1.229
8/31/2002	0.64	1.11	1.74		6.68	17.01	29.63	0.000	1.226
9/30/2002	0.50	0.97	1.94		6.70	17.04	29.63	0.000	1.224
10/31/2002	0.62	1.16	1.87		6.72	17.08	29.63	0.000	1.221
11/30/2002	0.64	1.03	1.61		6.73	17.11	29.63	0.000	1.219
12/31/2002	0.66	1.34	2.05		6.75	17.15	29.63	0.000	1.216
1/31/2003	0.64	1.42	2.20		6.77	17.20	29.63	0.000	1.212
2/28/2003	0.64	1.35	2.13		6.79	17.23	29.63	0.000	1.210
3/31/2003	0.66	1.48	2.24		6.81	17.28	29.63	0.000	1.206
4/30/2003	0.64	1.41	2.20		6.83	17.32	29.63	0.000	1.203
5/31/2003	0.57	1.27	2.23		6.85	17.36	29.63	0.000	1.200
6/30/2003	0.57	1.38	2.41		6.87	17.40	29.63	0.000	1.197
7/31/2003	0.59	1.35	2.30		6.88	17.44	29.63	0.000	1.194
8/31/2003	0.59	1.32	2.25		6.90	17.48	29.63	0.000	1.192
9/30/2003	0.59	1.41	2.37		6.92	17.53	29.63	0.000	1.189
10/31/2003	0.61	1.41	2.31		6.94	17.57	29.63	0.000	1.186
11/30/2003	0.61	1.41	2.30		6.96	17.61	29.63	0.000	1.183

Date	Oil Rate (CD) m3/d	Water Rate (CD) m3/d	Water Oil Ratio m3/m3	Water Inj Rate (CD) m3/d	Cum Oil Prod Km3	Cum Water Prod Km3	Cum Water Inj Km3	Voidage Replacement Ratio	Cum Voidage Replacemt Ratio
12/31/2003	0.60	1.57	2.64		6.98	17.66	29.63	0.000	1.179
1/31/2004	0.59	1.46	2.47		7.00	17.71	29.63	0.000	1.176
2/29/2004	0.59	1.38	2.35		7.01	17.75	29.63	0.000	1.174
3/31/2004	0.59	1.49	2.52		7.03	17.79	29.63	0.000	1.171
4/30/2004	0.59	1.73	2.94		7.05	17.84	29.63	0.000	1.167
5/31/2004	0.58	1.82	3.16		7.07	17.90	29.63	0.000	1.164
6/30/2004	0.49	1.25	2.57		7.08	17.94	29.63	0.000	1.161
7/31/2004	0.50	1.09	2.15		7.10	17.97	29.63	0.000	1.159
8/31/2004	0.51	1.06	2.09		7.11	18.00	29.63	0.000	1.157
9/30/2004	0.50	1.01	2.03		7.13	18.04	29.63	0.000	1.155
10/31/2004	0.49	1.04	2.11		7.14	18.07	29.63	0.000	1.153
11/30/2004	0.48	1.03	2.14		7.16	18.10	29.63	0.000	1.151
12/31/2004	0.50	1.05	2.12		7.17	18.13	29.63	0.000	1.148
1/31/2005	0.52	1.06	2.03		7.19	18.16	29.63	0.000	1.146
2/28/2005	0.50	1.06	2.10		7.20	18.19	29.63	0.000	1.144
3/31/2005	0.51	1.12	2.17		7.22	18.23	29.63	0.000	1.142
4/30/2005	0.47	1.01	2.16		7.23	18.26	29.63	0.000	1.140
5/31/2005	0.51	1.06	2.09		7.25	18.29	29.63	0.000	1.138
6/30/2005	0.55	1.16	2.12		7.26	18.33	29.63	0.000	1.135
7/31/2005	0.56	1.14	2.05		7.28	18.36	29.63	0.000	1.133
8/31/2005	0.55	1.15	2.08		7.30	18.40	29.63	0.000	1.131
9/30/2005	0.56	1.15	2.06		7.32	18.43	29.63	0.000	1.129
10/31/2005	0.55	1.04	1.91		7.33	18.46	29.63	0.000	1.126
11/30/2005	0.55	1.07	1.93		7.35	18.50	29.63	0.000	1.124
12/31/2005	0.56	1.08	1.92		7.37	18.53	29.63	0.000	1.122
1/31/2006	0.57	1.06	1.86		7.38	18.56	29.63	0.000	1.120
2/28/2006	0.55	1.03	1.89		7.40	18.59	29.63	0.000	1.118
3/31/2006	0.58	1.40	2.42		7.42	18.63	29.63	0.000	1.115
4/30/2006	0.51	0.97	1.88		7.43	18.66	29.63	0.000	1.113
5/31/2006	0.55	1.07	1.93		7.45	18.70	29.63	0.000	1.111
6/30/2006	0.53	0.98	1.83		7.47	18.73	29.63	0.000	1.109
7/31/2006	0.48	1.03	2.14		7.48	18.76	29.63	0.000	1.107
8/31/2006	0.49	1.01	2.07		7.50	18.79	29.63	0.000	1.105
9/30/2006	0.48	1.10	2.28		7.51	18.82	29.63	0.000	1.103
10/31/2006	0.47	1.08	2.28		7.52	18.86	29.63	0.000	1.101
11/30/2006	0.48	0.50	1.03		7.54	18.87	29.63	0.000	1.100
12/31/2006	0.50	1.16	2.31		7.55	18.91	29.63	0.000	1.098
1/31/2007	0.48	1.19	2.49		7.57	18.94	29.63	0.000	1.096
2/28/2007	0.50	1.19	2.40		7.58	18.98	29.63	0.000	1.094
3/31/2007	0.51	1.25	2.44		7.60	19.02	29.63	0.000	1.092
4/30/2007	0.51	1.20	2.35		7.61	19.05	29.63	0.000	1.090
5/31/2007	0.50	1.33	2.65		7.63	19.09	29.63	0.000	1.087
6/30/2007	0.51	1.19	2.35		7.65	19.13	29.63	0.000	1.085
7/31/2007	0.47	1.19	2.51		7.66	19.16	29.63	0.000	1.083
8/31/2007	0.48	1.06	2.21		7.67	19.20	29.63	0.000	1.081
9/30/2007	0.46	1.04	2.24		7.69	19.23	29.63	0.000	1.079
10/31/2007	0.47	1.06	2.24		7.70	19.26	29.63	0.000	1.077
11/30/2007	0.46	1.33	2.89		7.72	19.30	29.63	0.000	1.075

Date	Oil Rate (CD) m3/d	Water Rate (CD) m3/d	Water Oil Ratio m3/m3	Water Inj Rate (CD) m3/d	Cum Oil Prod Km3	Cum Water Prod Km3	Cum Water Inj Km3	Voidage Replacement Ratio	Cum Voidage Replacemt Ratio
12/31/2007	0.47	1.36	2.90		7.73	19.34	29.63	0.000	1.073
1/31/2008	0.47	1.34	2.86	1.00	7.75	19.39	29.66	0.544	1.072
2/29/2008	0.45	1.31	2.92		7.76	19.42	29.66	0.000	1.070
3/31/2008	0.44	1.37	3.11	1.00	7.77	19.47	29.69	0.545	1.069
4/30/2008	0.45	1.38	3.06	1.00	7.79	19.51	29.72	0.536	1.068
5/31/2008	0.43	1.36	3.13	1.00	7.80	19.55	29.75	0.549	1.067
6/30/2008	0.50	1.16	2.33	0.97	7.81	19.58	29.78	0.573	1.066
7/31/2008	0.47	1.14	2.43	1.00	7.83	19.62	29.81	0.610	1.065
8/31/2008	0.48	1.09	2.26	1.00	7.84	19.65	29.84	0.625	1.064
9/30/2008	0.47	0.98	2.10	0.19	7.86	19.68	29.85	0.128	1.063
10/31/2008	0.48	1.10	2.31	0.20	7.87	19.72	29.86	0.124	1.061
11/30/2008	0.62	1.12	1.80	2.08	7.89	19.75	29.92	1.167	1.061
12/31/2008	0.62	1.15	1.84	2.06	7.91	19.79	29.98	1.132	1.061
1/31/2009	0.62	1.15	1.85	2.08	7.93	19.82	30.05	1.149	1.062
2/28/2009	0.61	1.17	1.92	2.08	7.95	19.85	30.10	1.136	1.062
3/31/2009	0.60	1.26	2.08	2.07	7.97	19.89	30.17	1.089	1.062
4/30/2009	0.62	1.20	1.94	2.09	7.98	19.93	30.23	1.125	1.062
5/31/2009	0.61	1.17	1.92	2.08	8.00	19.96	30.30	1.142	1.062
6/30/2009	0.63	1.18	1.87	2.07	8.02	20.00	30.36	1.121	1.062
7/31/2009	0.60	1.20	1.98	2.05	8.04	20.04	30.42	1.108	1.062
8/31/2009	0.61	1.09	1.78	2.14	8.06	20.07	30.49	1.227	1.063
9/30/2009	0.60	0.89	1.49	2.11	8.08	20.10	30.55	1.378	1.063
10/31/2009	0.62	0.90	1.45	2.05	8.10	20.13	30.61	1.319	1.064
11/30/2009	0.63	0.87	1.39	1.90	8.12	20.15	30.67	1.232	1.064
12/31/2009	0.64	0.86	1.35	1.98	8.14	20.18	30.73	1.289	1.064
1/31/2010	0.64	0.81	1.27	1.99	8.16	20.20	30.79	1.332	1.065
2/28/2010	0.65	0.79	1.23	2.00	8.17	20.23	30.85	1.348	1.065
3/31/2010	0.64	0.80	1.25	2.02	8.19	20.25	30.91	1.357	1.066
4/30/2010	0.65	0.87	1.34	2.01	8.21	20.28	30.97	1.285	1.066
5/31/2010	0.66	1.04	1.58	1.98	8.23	20.31	31.03	1.133	1.066
6/30/2010	0.68	1.07	1.57	1.14	8.25	20.34	31.07	0.632	1.065
7/31/2010	0.68	1.05	1.54	23.79	8.27	20.37	31.81	13.438	1.088
8/31/2010	0.68	1.08	1.60	2.57	8.30	20.41	31.89	1.427	1.089
9/30/2010	0.66	1.05	1.59	3.12	8.32	20.44	31.98	1.770	1.090
10/31/2010	0.69	1.09	1.58	3.12	8.34	20.47	32.08	1.706	1.091
11/30/2010	0.66	1.06	1.59	3.08	8.36	20.50	32.17	1.747	1.093
12/31/2010	0.68	1.01	1.48	3.16	8.38	20.54	32.27	1.824	1.094
1/31/2011	0.65	1.03	1.57	3.19	8.40	20.57	32.37	1.851	1.095
2/28/2011	0.68	1.02	1.50	3.19	8.42	20.60	32.46	1.831	1.097
3/31/2011	0.67	1.01	1.52	3.18	8.44	20.63	32.55	1.846	1.098
4/30/2011	0.66	0.95	1.44	3.12	8.46	20.66	32.65	1.887	1.099
5/31/2011	0.65	0.92	1.42	3.04	8.48	20.68	32.74	1.891	1.101
6/30/2011	0.59	0.91	1.53	2.73	8.50	20.71	32.82	1.761	1.102
7/31/2011	0.67	1.00	1.50	1.73	8.52	20.74	32.88	1.010	1.101
8/31/2011	0.68	0.99	1.46		8.54	20.77	32.88	0.000	1.099
9/30/2011	0.68	1.04	1.53		8.56	20.80	32.88	0.000	1.098
10/31/2011	0.68	1.03	1.51	2.11	8.58	20.84	32.94	1.202	1.098
11/30/2011	0.68	1.01	1.50	2.24	8.60	20.87	33.01	1.288	1.098

Date	Oil Rate (CD) m3/d	Water Rate (CD) m3/d	Water Oil Ratio m3/m3	Water Inj Rate (CD) m3/d	Cum Oil Prod Km3	Cum Water Prod Km3	Cum Water Inj Km3	Voidage Replacement Ratio	Cum Voidage Replacemt Ratio
12/31/2011	0.68	1.01	1.49	2.10	8.62	20.90	33.07	1.213	1.098
1/31/2012	0.66	1.02	1.55	2.11	8.64	20.93	33.14	1.227	1.098
2/29/2012	0.67	1.02	1.54	2.19	8.66	20.96	33.20	1.265	1.099
3/31/2012	0.66	1.10	1.66	2.17	8.68	20.99	33.27	1.204	1.099
4/30/2012	0.66	1.01	1.55	2.96	8.70	21.02	33.36	1.724	1.100
5/31/2012	0.65	1.01	1.56	3.63	8.72	21.05	33.47	2.126	1.102
6/30/2012	0.66	1.02	1.55	4.18	8.74	21.08	33.60	2.434	1.104
7/31/2012	0.65	1.02	1.56	1.03	8.76	21.12	33.63	0.603	1.103
8/31/2012	0.63	1.06	1.68	1.00	8.78	21.15	33.66	0.576	1.102
9/30/2012	0.62	1.09	1.74	1.00	8.80	21.18	33.69	0.570	1.101
10/31/2012	0.47	0.84	1.78	1.00	8.81	21.21	33.72	0.743	1.101
11/30/2012	0.54	0.95	1.75	1.00	8.83	21.24	33.75	0.652	1.100
12/31/2012	0.64	1.04	1.63	0.94	8.85	21.27	33.78	0.542	1.099